

Datasheet for ABIN7258792

anti-FER1L5 antibody**2** Images[Go to Product page](#)

Overview

Quantity:	200 µL
Target:	FER1L5
Reactivity:	Mouse, Rat
Host:	Rabbit
Clonality:	Polyclonal
Conjugate:	This FER1L5 antibody is un-conjugated
Application:	Immunofluorescence (IF)

Product Details

Immunogen:	Recombinant fusion protein of human FER1L5 (NP_001280012.1).
Isotype:	IgG
Characteristics:	Polyclonal Antibody
Purification:	Affinity purification

Target Details

Target:	FER1L5
Alternative Name:	FER1L5 (FER1L5 Products)
Background:	FER1L5 (Fer-1 Like Family Member 5) is a Protein Coding gene. Diseases associated with FER1L5 include Miyoshi Muscular Dystrophy and Deafness, Autosomal Recessive 9. An important paralog of this gene is DYSF.

Target Details

Gene ID: 90342

UniProt: [A0AVI2](#)

Application Details

Application Notes: IF 1:50-1:200

Restrictions: For Research Use only

Handling

Format: Liquid

Concentration: 1 mg/mL

Buffer: PBS with 0.02 % sodium azide, 50 % glycerol, pH 7.3

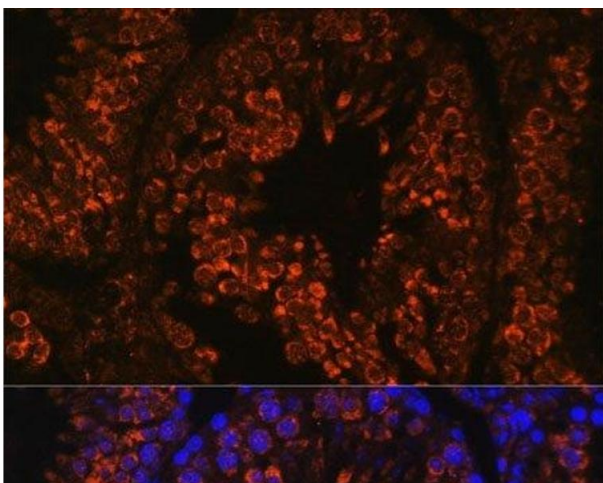
Preservative: Sodium azide

Precaution of Use: This product contains Sodium azide: a POISONOUS AND HAZARDOUS SUBSTANCE which should be handled by trained staff only.

Storage: -20 °C

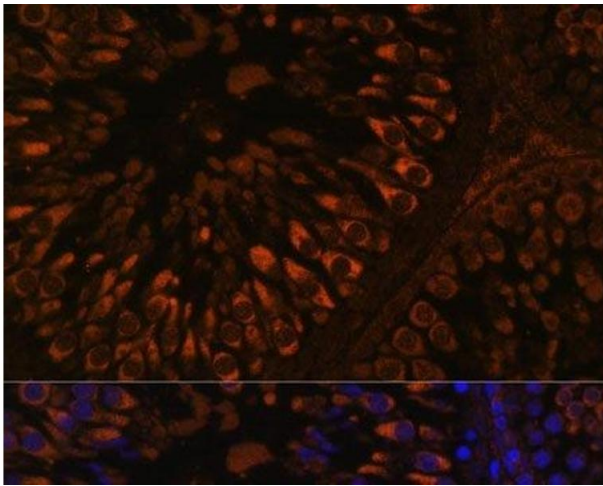
Storage Comment: Store at -20°C. Avoid freeze / thaw cycles.

Images



Immunofluorescence

Image 1. Immunofluorescence analysis of Mouse testis using FER1L5 Polyclonal Antibody at dilution of 1:100. Blue: DAPI for nuclear staining.



Immunofluorescence

Image 2. Immunofluorescence analysis of Rat testis using FER1L5 Polyclonal Antibody at dilution of 1:100. Blue: DAPI for nuclear staining.