



[Go to Product page](#)

Datasheet for ABIN7258802

## anti-CHCHD1 antibody

### 1 Image

#### Overview

Quantity:	200 µL
Target:	CHCHD1
Reactivity:	Human, Mouse
Host:	Rabbit
Clonality:	Polyclonal
Conjugate:	This CHCHD1 antibody is un-conjugated
Application:	Western Blotting (WB)

#### Product Details

Immunogen:	Recombinant fusion protein of human CHCHD1 (NP_976043.1).
Isotype:	IgG
Characteristics:	Polyclonal Antibody
Purification:	Affinity purification

#### Target Details

Target:	CHCHD1
Alternative Name:	CHCHD1 ( <a href="#">CHCHD1 Products</a> )
Background:	CHCHD1 (Coiled-Coil-Helix-Coiled-Coil-Helix Domain Containing 1) is a Protein Coding gene. Among its related pathways are Organelle biogenesis and maintenance and Mitochondrial translation.

## Target Details

Molecular Weight: Observed\_MW: 13 kDa  
Calculated\_MW: 13 kDa

Gene ID: 118487

UniProt: [Q96BP2](#)

## Application Details

Application Notes: WB 1:500-1:2000

Restrictions: For Research Use only

## Handling

Format: Liquid

Concentration: 1 mg/mL

Buffer: PBS with 0.02 % sodium azide, 50 % glycerol, pH 7.3

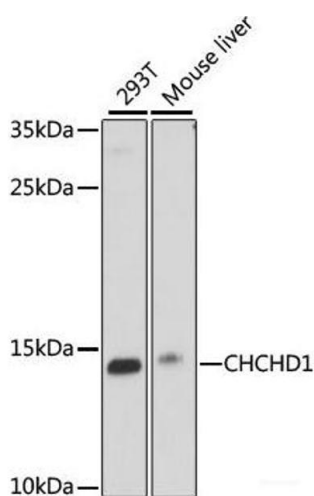
Preservative: Sodium azide

Precaution of Use: This product contains Sodium azide: a POISONOUS AND HAZARDOUS SUBSTANCE which should be handled by trained staff only.

Storage: -20 °C

Storage Comment: Store at -20°C. Avoid freeze / thaw cycles.

## Images



### Western Blotting

**Image 1.** Western blot analysis of extracts of various cell lines using CHCHD1 Polyclonal Antibody at dilution of 1:1000.