



Datasheet for ABIN7258834 anti-**PLEKHA1** antibody



[Go to Product page](#)

1 Image

Overview

| | |
|--------------|--|
| Quantity: | 200 µL |
| Target: | PLEKHA1 |
| Reactivity: | Human |
| Host: | Rabbit |
| Clonality: | Polyclonal |
| Conjugate: | This PLEKHA1 antibody is un-conjugated |
| Application: | Immunofluorescence (IF) |

Product Details

| | |
|------------------|--|
| Immunogen: | Recombinant fusion protein of human PLEKHA1 (NP_067635.2). |
| Isotype: | IgG |
| Characteristics: | Polyclonal Antibody |
| Purification: | Affinity purification |

Target Details

| | |
|-------------------|---|
| Target: | PLEKHA1 |
| Alternative Name: | PLEKHA1 (PLEKHA1 Products) |
| Background: | This gene encodes a pleckstrin homology domain-containing adapter protein. The encoded protein is localized to the plasma membrane where it specifically binds phosphatidylinositol 3,4-bisphosphate. This protein may be involved in the formation of signaling complexes in the plasma membrane. Polymorphisms in this gene are associated with age-related macular |

Target Details

degeneration. Alternate splicing results in multiple transcript variants. A pseudogene of this gene is found on chromosome 5.

Gene ID: 59338

UniProt: [Q9HB21](#)

Pathways: [Platelet-derived growth Factor Receptor Signaling](#)

Application Details

Application Notes: IF 1:50-1:200

Restrictions: For Research Use only

Handling

Format: Liquid

Concentration: 1 mg/mL

Buffer: PBS with 0.02 % sodium azide, 50 % glycerol, pH 7.3

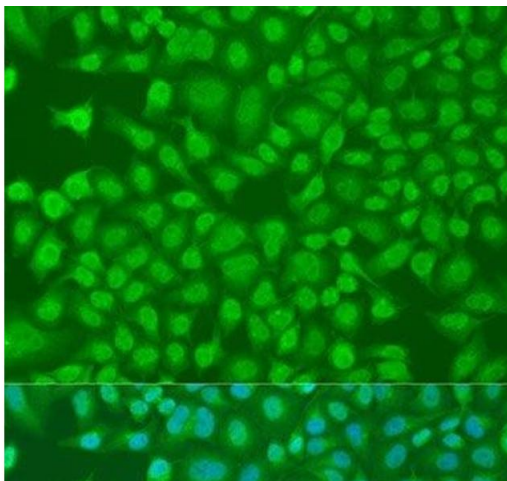
Preservative: Sodium azide

Precaution of Use: This product contains Sodium azide: a POISONOUS AND HAZARDOUS SUBSTANCE which should be handled by trained staff only.

Storage: -20 °C

Storage Comment: Store at -20°C. Avoid freeze / thaw cycles.

Images



Immunofluorescence

Image 1. Immunofluorescence analysis of U2OS cells using PLEKHA1 Polyclonal Antibody at dilution of 1:100. Blue: DAPI for nuclear staining.