



[Go to Product page](#)

Datasheet for ABIN7258864

anti-DCT antibody

1 Image

Overview

Quantity:	200 µL
Target:	DCT
Reactivity:	Human, Mouse
Host:	Rabbit
Clonality:	Polyclonal
Conjugate:	This DCT antibody is un-conjugated
Application:	Western Blotting (WB)

Product Details

Immunogen:	Recombinant fusion protein of human DCT (NP_001913.2).
Isotype:	IgG
Characteristics:	Polyclonal Antibody
Purification:	Affinity purification

Target Details

Target:	DCT
Alternative Name:	DCT (DCT Products)
Background:	DCT (Dopachrome Tautomerase) is a Protein Coding gene. Diseases associated with DCT include Amelanotic Melanoma and Vitiligo-Associated Multiple Autoimmune Disease Susceptibility 1. Among its related pathways are Neural Crest Differentiation and Aldosterone synthesis and secretion. Gene Ontology (GO) annotations related to this gene include

Target Details

oxidoreductase activity and dopachrome isomerase activity. An important paralog of this gene is TYRP1.

Molecular Weight: Observed_MW: 59 kDa
Calculated_MW: 59 kDa/62 kDa

Gene ID: 1638

UniProt: [P40126](#)

Application Details

Application Notes: WB 1:500-1:2000

Restrictions: For Research Use only

Handling

Format: Liquid

Concentration: 1 mg/mL

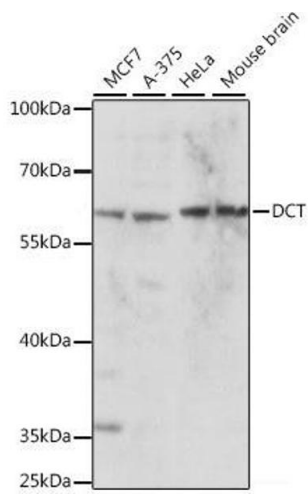
Buffer: PBS with 0.02 % sodium azide, 50 % glycerol, pH 7.3

Preservative: Sodium azide

Precaution of Use: This product contains Sodium azide: a POISONOUS AND HAZARDOUS SUBSTANCE which should be handled by trained staff only.

Storage: -20 °C

Storage Comment: Store at -20°C. Avoid freeze / thaw cycles.



Western Blotting

Image 1. Western blot analysis of extracts of various cell lines using DCT Polyclonal Antibody at dilution of 1:1000.