

Datasheet for ABIN7258872

anti-GRF2 antibody**2** Images[Go to Product page](#)

Overview

Quantity:	200 µL
Target:	GRF2 (RAPGEF1)
Reactivity:	Human, Mouse, Rat
Host:	Rabbit
Clonality:	Polyclonal
Conjugate:	This GRF2 antibody is un-conjugated
Application:	Immunofluorescence (IF)

Product Details

Immunogen:	Recombinant fusion protein of human RAPGEF1 (NP_941372.1).
Isotype:	IgG
Characteristics:	Polyclonal Antibody
Purification:	Affinity purification

Target Details

Target:	GRF2 (RAPGEF1)
Alternative Name:	RAPGEF1 (RAPGEF1 Products)
Background:	This gene encodes a human guanine nucleotide exchange factor. It transduces signals from CRK by binding the SH3 domain of CRK, and activating several members of the Ras family of GTPases. This signaling cascade that may be involved in apoptosis, integrin-mediated signal transduction, and cell transformation. Several alternatively spliced transcript variants of this

Target Details

gene have been described, but the full-length nature of some variants has not been determined.

Gene ID: 2889

UniProt: [Q13905](#)

Pathways: [Interferon-gamma Pathway](#), [Neurotrophin Signaling Pathway](#), [Platelet-derived growth Factor Receptor Signaling](#), [Signaling of Hepatocyte Growth Factor Receptor](#)

Application Details

Application Notes: IF 1:50-1:100

Restrictions: For Research Use only

Handling

Format: Liquid

Concentration: 1 mg/mL

Buffer: PBS with 0.02 % sodium azide, 50 % glycerol, pH 7.3

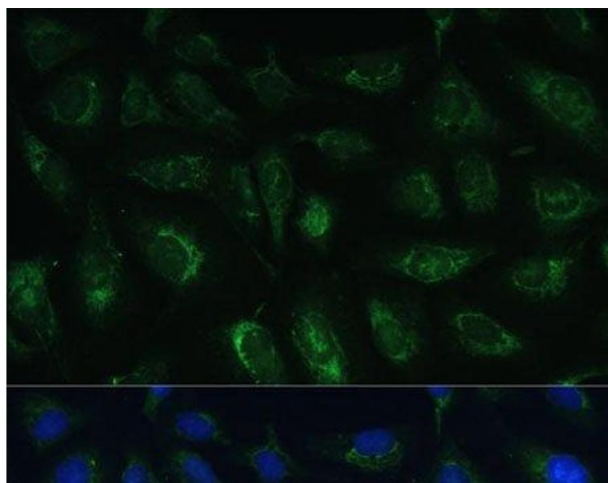
Preservative: Sodium azide

Precaution of Use: This product contains Sodium azide: a POISONOUS AND HAZARDOUS SUBSTANCE which should be handled by trained staff only.

Storage: -20 °C

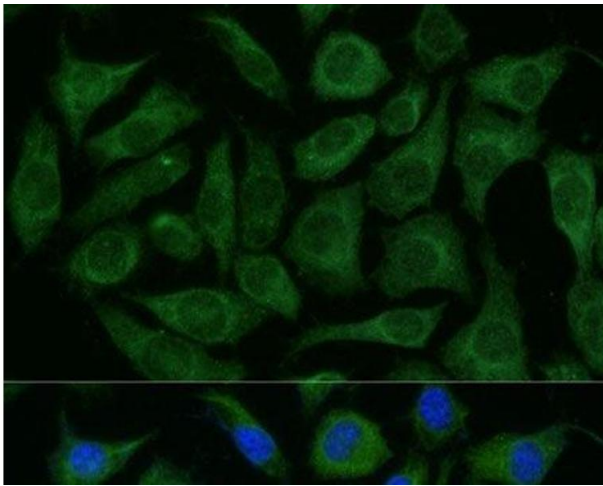
Storage Comment: Store at -20°C. Avoid freeze / thaw cycles.

Images



Immunofluorescence

Image 1. Immunofluorescence analysis of U-2 OS cells using RAPGEF1 Polyclonal Antibody at dilution of 1:100 (40x lens). Blue: DAPI for nuclear staining.



Immunofluorescence

Image 2. Immunofluorescence analysis of L929 cells using RAPGEF1 Polyclonal Antibody at dilution of 1:100 (40x lens). Blue: DAPI for nuclear staining.