



[Go to Product page](#)

Datasheet for ABIN7258896

anti-MLF2 antibody

3 Images

Overview

Quantity:	200 µL
Target:	MLF2
Reactivity:	Human, Mouse, Rat
Host:	Rabbit
Clonality:	Polyclonal
Conjugate:	This MLF2 antibody is un-conjugated
Application:	Immunohistochemistry (IHC)

Product Details

Immunogen:	Recombinant fusion protein of human MLF2 (NP_005430.1).
Isotype:	IgG
Characteristics:	Polyclonal Antibody
Purification:	Affinity purification

Target Details

Target:	MLF2
Alternative Name:	MLF2 (MLF2 Products)
Background:	MLF2 (Myeloid Leukemia Factor 2) is a Protein Coding gene. Diseases associated with MLF2 include Myeloid Leukemia and Fatal Infantile Hypertonic Myofibrillar Myopathy. An important paralog of this gene is MLF1.

Target Details

Gene ID: 8079

UniProt: [Q15773](#)

Application Details

Application Notes: IHC 1:100-1:200

Restrictions: For Research Use only

Handling

Format: Liquid

Concentration: 1 mg/mL

Buffer: PBS with 0.02 % sodium azide, 50 % glycerol, pH 7.3

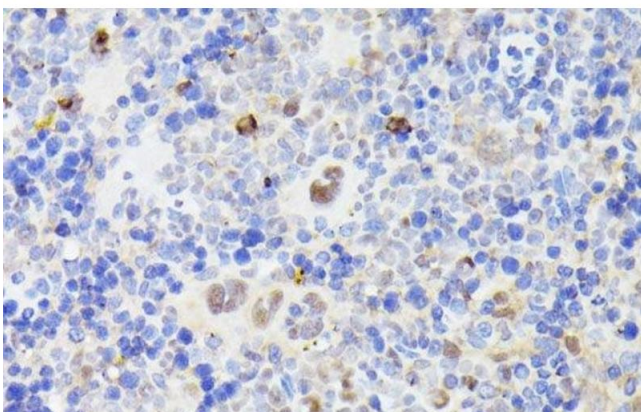
Preservative: Sodium azide

Precaution of Use: This product contains Sodium azide: a POISONOUS AND HAZARDOUS SUBSTANCE which should be handled by trained staff only.

Storage: -20 °C

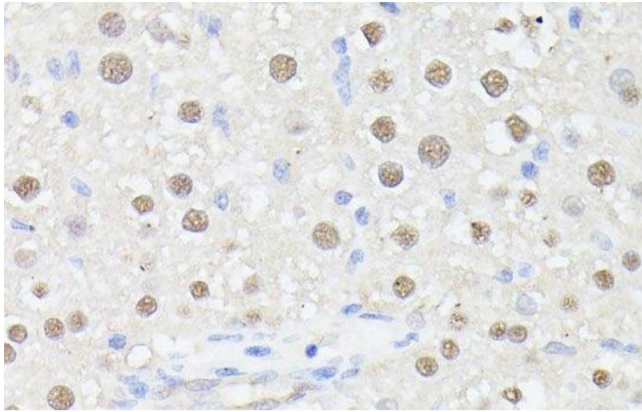
Storage Comment: Store at -20°C. Avoid freeze / thaw cycles.

Images



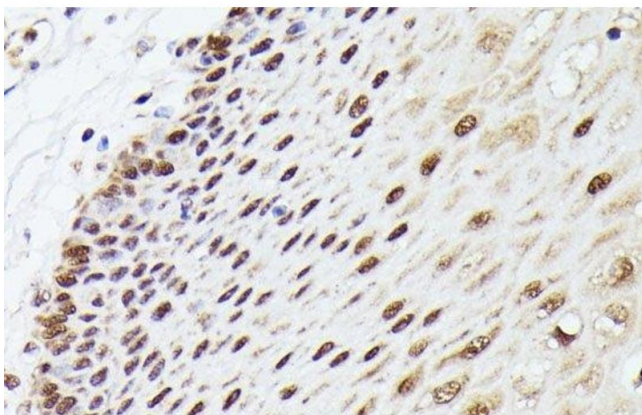
Immunohistochemistry (Paraffin-embedded Sections)

Image 1. Immunohistochemistry of paraffin-embedded Mouse spleen using MLF2 Polyclonal Antibody at dilution of 1:100 (40x lens).



Immunohistochemistry (Paraffin-embedded Sections)

Image 2. Immunohistochemistry of paraffin-embedded Rat liver using MLF2 Polyclonal Antibody at dilution of 1:100 (40x lens).



Immunohistochemistry (Paraffin-embedded Sections)

Image 3. Immunohistochemistry of paraffin-embedded Human esophageal using MLF2 Polyclonal Antibody at dilution of 1:100 (40x lens).