

Datasheet for ABIN7258904

**anti-ELAVL1 antibody**

## 7 Images

[Go to Product page](#)

## Overview

Quantity:	200 µL
Target:	ELAVL1
Reactivity:	Human, Mouse, Rat
Host:	Rabbit
Clonality:	Polyclonal
Conjugate:	This ELAVL1 antibody is un-conjugated
Application:	Western Blotting (WB), Immunohistochemistry (IHC), Immunofluorescence (IF)

## Product Details

Immunogen:	Recombinant fusion protein of human HuR / ELAVL1 (NP_001410.2).
Isotype:	IgG
Specificity:	This antibody ist KO validated.
Characteristics:	Polyclonal Antibody
Purification:	Affinity purification
Grade:	KO Validated

## Target Details

Target:	ELAVL1
Alternative Name:	HuR / ELAVL1 ( <a href="#">ELAVL1 Products</a> )
Background:	The protein encoded by this gene is a member of the ELAVL family of RNA-binding proteins that

## Target Details

contain several RNA recognition motifs, and selectively bind AU-rich elements (AREs) found in the 3' untranslated regions of mRNAs. AREs signal degradation of mRNAs as a means to regulate gene expression, thus by binding AREs, the ELAVL family of proteins play a role in stabilizing ARE-containing mRNAs. This gene has been implicated in a variety of biological processes and has been linked to a number of diseases, including cancer. It is highly expressed in many cancers, and could be potentially useful in cancer diagnosis, prognosis, and therapy.

Molecular Weight:	Observed_MW: 37 kDa Calculated_MW: 36 kDa/38 kDa
-------------------	---

Gene ID:	1994
----------	------

UniProt:	<a href="#">Q15717</a>
----------	------------------------

Pathways:	<a href="#">AMPK Signaling</a>
-----------	--------------------------------

## Application Details

Application Notes:	WB 1:500-1:2000 IHC 1:100-1:200 IF 1:50-1:200
--------------------	---

Restrictions:	For Research Use only
---------------	-----------------------

## Handling

Format:	Liquid
---------	--------

Concentration:	1 mg/mL
----------------	---------

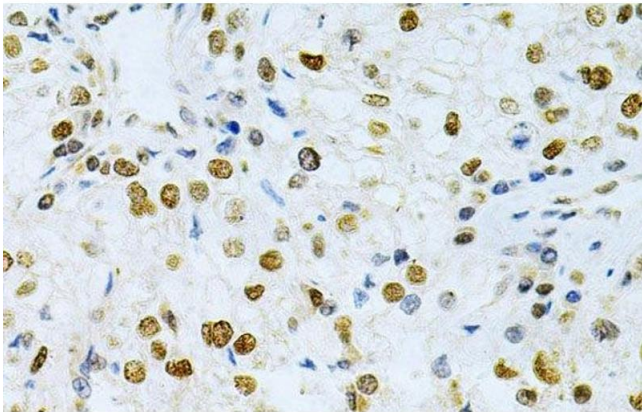
Buffer:	PBS with 0.02 % sodium azide, 50 % glycerol, pH 7.3
---------	---

Preservative:	Sodium azide
---------------	--------------

Precaution of Use:	This product contains Sodium azide: a POISONOUS AND HAZARDOUS SUBSTANCE which should be handled by trained staff only.
--------------------	--

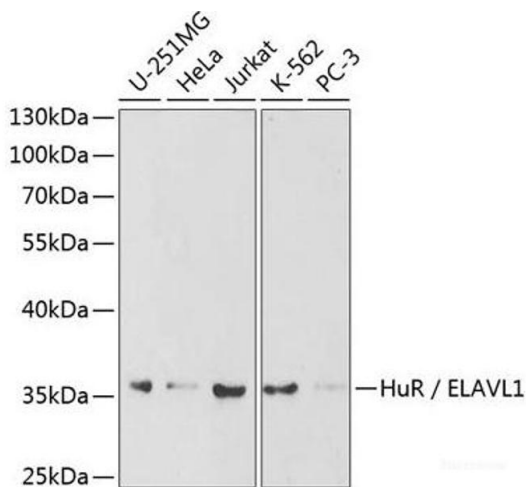
Storage:	-20 °C
----------	--------

Storage Comment:	Store at -20°C. Avoid freeze / thaw cycles.
------------------	---



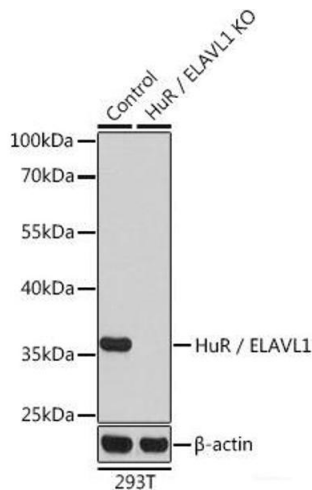
#### Immunohistochemistry (Paraffin-embedded Sections)

**Image 1.** Immunohistochemistry of paraffin-embedded Human kidney cancer using HuR / ELAVL1 Polyclonal Antibody at dilution of 1:200 (40x lens).



#### Western Blotting

**Image 2.** Western blot analysis of extracts of various cell lines using HuR / ELAVL1 Polyclonal Antibody at dilution of 1:1000.



#### Western Blotting

**Image 3.** Western blot analysis of extracts from normal (control) and HuR / ELAVL1 knockout (KO) 293T cells using HuR / ELAVL1 Polyclonal Antibody at dilution of 1:1000.

Please check the [product details page](#) for more images. Overall 7 images are available for ABIN7258904.