

Datasheet for ABIN7258922

anti-Epsin 2 antibody**1** Image[Go to Product page](#)

Overview

Quantity:	200 µL
Target:	Epsin 2 (EPN2)
Reactivity:	Human
Host:	Rabbit
Clonality:	Polyclonal
Conjugate:	This Epsin 2 antibody is un-conjugated
Application:	Western Blotting (WB)

Product Details

Immunogen:	Recombinant fusion protein of human EPN2 (NP_683723.2).
Isotype:	IgG
Characteristics:	Polyclonal Antibody
Purification:	Affinity purification

Target Details

Target:	Epsin 2 (EPN2)
Alternative Name:	EPN2 (EPN2 Products)
Background:	This gene encodes a protein which interacts with clathrin and adaptor-related protein complex 2, alpha 1 subunit. The protein is found in a brain-derived clathrin-coated vesicle fraction and localizes to the peri-Golgi region and the cell periphery. The protein is thought to be involved in clathrin-mediated endocytosis. Alternate splicing of this gene results in multiple transcript

Target Details

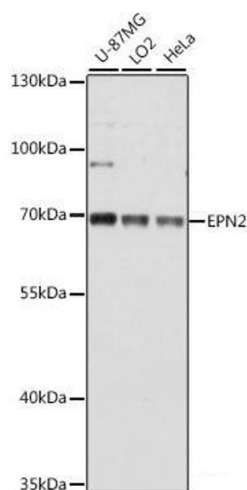
	variants encoding different isoforms.
Molecular Weight:	Observed_MW: 70 kDa Calculated_MW: 36 kDa/57 kDa/62 kDa/68 kDa
Gene ID:	22905
UniProt:	O95208
Pathways:	EGFR Downregulation

Application Details

Application Notes:	WB 1:500-1:2000
Restrictions:	For Research Use only

Handling

Format:	Liquid
Concentration:	1 mg/mL
Buffer:	PBS with 0.02 % sodium azide, 50 % glycerol, pH 7.3
Preservative:	Sodium azide
Precaution of Use:	This product contains Sodium azide: a POISONOUS AND HAZARDOUS SUBSTANCE which should be handled by trained staff only.
Storage:	-20 °C
Storage Comment:	Store at -20°C. Avoid freeze / thaw cycles.



Western Blotting

Image 1. Western blot analysis of extracts of various cell lines using EPN2 Polyclonal Antibody at dilution of 1:1000.