

Datasheet for ABIN7258940

anti-LHX5 antibody[Go to Product page](#)**1** Image

Overview

Quantity:	200 µL
Target:	LHX5
Reactivity:	Human, Rat, Mouse
Host:	Rabbit
Clonality:	Polyclonal
Conjugate:	This LHX5 antibody is un-conjugated
Application:	Western Blotting (WB)

Product Details

Immunogen:	Recombinant fusion protein of human LHX5 (NP_071758.1).
Isotype:	IgG
Characteristics:	Polyclonal Antibody
Purification:	Affinity purification

Target Details

Target:	LHX5
Alternative Name:	LHX5 (LHX5 Products)
Background:	This gene encodes a protein belonging to a large protein family, members of which carry the LIM domain, a unique cysteine-rich zinc-binding domain. The encoded protein may function as a transcriptional regulator and be involved in the control of differentiation and development of the forebrain. In mice, this protein is essential for the regulation of precursor cell proliferation

Target Details

and the control of neuronal differentiation and migration during hippocampal development.
This protein is involved in learning and motor functions in adult mice.

Molecular Weight: Observed_MW: Refer to figures
Calculated_MW: 44 kDa

Gene ID: 64211

UniProt: [Q9H2C1](#)

Application Details

Application Notes: WB 1:500-1:2000

Restrictions: For Research Use only

Handling

Format: Liquid

Concentration: 1 mg/mL

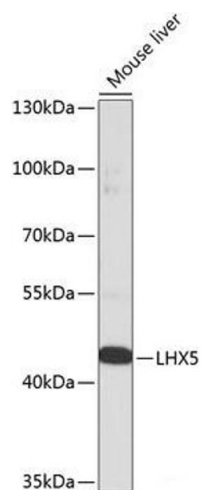
Buffer: PBS with 0.02 % sodium azide, 50 % glycerol, pH 7.3

Preservative: Sodium azide

Precaution of Use: This product contains Sodium azide: a POISONOUS AND HAZARDOUS SUBSTANCE which should be handled by trained staff only.

Storage: -20 °C

Storage Comment: Store at -20°C. Avoid freeze / thaw cycles.



Western Blotting

Image 1. Western blot analysis of extracts of Mouse liver using LHX5 Polyclonal Antibody at dilution of 1:1000.