



Datasheet for ABIN7258944  
**anti-TRAPPC6A antibody**



[Go to Product page](#)

1 Image

### Overview

Quantity:	200 µL
Target:	TRAPPC6A
Reactivity:	Mouse, Rat
Host:	Rabbit
Clonality:	Polyclonal
Conjugate:	This TRAPPC6A antibody is un-conjugated
Application:	Immunofluorescence (IF)

### Product Details

Immunogen:	Recombinant fusion protein of human TRAPPC6A (NP_077013.1).
Isotype:	IgG
Characteristics:	Polyclonal Antibody
Purification:	Affinity purification

### Target Details

Target:	TRAPPC6A
Alternative Name:	TRAPPC6A ( <a href="#">TRAPPC6A Products</a> )
Background:	This gene encodes a component of the trafficking protein particle complex, which tethers transport vesicles to the cis-Golgi membrane. Loss of expression of the related gene in mouse affects coat and eye pigmentation, suggesting that the encoded protein may be involved in melanosome biogenesis. Alternatively spliced transcript variants encoding multiple isoforms

## Target Details

have been observed for this gene.

Gene ID: 79090

UniProt: [O75865](#)

## Application Details

Application Notes: IF 1:50-1:200

Restrictions: For Research Use only

## Handling

Format: Liquid

Concentration: 1 mg/mL

Buffer: PBS with 0.02 % sodium azide, 50 % glycerol, pH 7.3

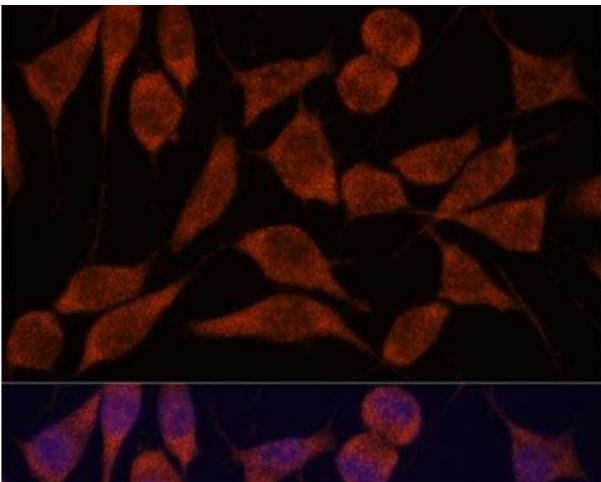
Preservative: Sodium azide

Precaution of Use: This product contains Sodium azide: a POISONOUS AND HAZARDOUS SUBSTANCE which should be handled by trained staff only.

Storage: -20 °C

Storage Comment: Store at -20°C. Avoid freeze / thaw cycles.

## Images



### Immunofluorescence

**Image 1.** Immunofluorescence analysis of L929 cells using TRAPPC6A Polyclonal Antibody at dilution of 1:100. Blue: DAPI for nuclear staining.