

Datasheet for ABIN7258966

anti-GPR155 antibody



[Go to Product page](#)

1 Image

Overview

Quantity:	200 µL
Target:	GPR155
Reactivity:	Mouse, Rat
Host:	Rabbit
Clonality:	Polyclonal
Conjugate:	This GPR155 antibody is un-conjugated
Application:	Western Blotting (WB)

Product Details

Immunogen:	Recombinant fusion protein of human GPR155 (NP_001028217.1).
Isotype:	IgG
Characteristics:	Polyclonal Antibody
Purification:	Affinity purification

Target Details

Target:	GPR155
Alternative Name:	GPR155 (GPR155 Products)
Background:	GPR155 (G Protein-Coupled Receptor 155) is a Protein Coding gene. Diseases associated with GPR155 include Isolated Growth Hormone Deficiency, Type Ib. An important paralog of this gene is PREX1.

Target Details

Molecular Weight: Observed_MW: 110 kDa
Calculated_MW: 96 kDa

Gene ID: 151556

UniProt: [Q7Z3F1](#)

Application Details

Application Notes: WB 1:500-1:2000

Restrictions: For Research Use only

Handling

Format: Liquid

Concentration: 1 mg/mL

Buffer: PBS with 0.02 % sodium azide, 50 % glycerol, pH 7.3

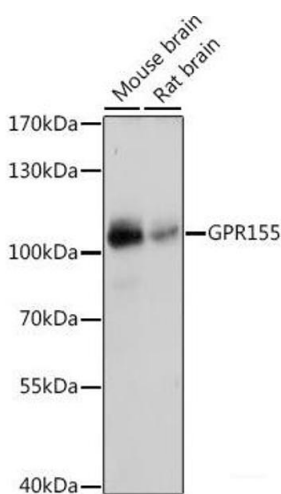
Preservative: Sodium azide

Precaution of Use: This product contains Sodium azide: a POISONOUS AND HAZARDOUS SUBSTANCE which should be handled by trained staff only.

Storage: -20 °C

Storage Comment: Store at -20°C. Avoid freeze / thaw cycles.

Images



Western Blotting

Image 1. Western blot analysis of extracts of various cell lines using GPR155 Polyclonal Antibody at dilution of 1:1000.