



## Datasheet for ABIN7258980 anti-GTPBP8 antibody



[Go to Product page](#)

### 1 Image

#### Overview

Quantity:	200 µL
Target:	GTPBP8
Reactivity:	Mouse
Host:	Rabbit
Clonality:	Polyclonal
Conjugate:	This GTPBP8 antibody is un-conjugated
Application:	Immunofluorescence (IF)

#### Product Details

Immunogen:	Recombinant fusion protein of human GTPBP8 (NP_054889.2).
Isotype:	IgG
Characteristics:	Polyclonal Antibody
Purification:	Affinity purification

#### Target Details

Target:	GTPBP8
Alternative Name:	GTPBP8 ( <a href="#">GTPBP8 Products</a> )
Background:	GTPBP8 (GTP Binding Protein 8 (Putative)) is a Protein Coding gene. Diseases associated with GTPBP8 include Li-Fraumeni Syndrome 2. Gene Ontology (GO) annotations related to this gene include GTP binding and ferrous iron transmembrane transporter activity.

## Target Details

Gene ID: 29083

UniProt: [Q8N3Z3](#)

## Application Details

Application Notes: IF 1:50-1:200

Restrictions: For Research Use only

## Handling

Format: Liquid

Concentration: 1 mg/mL

Buffer: PBS with 0.02 % sodium azide, 50 % glycerol, pH 7.3

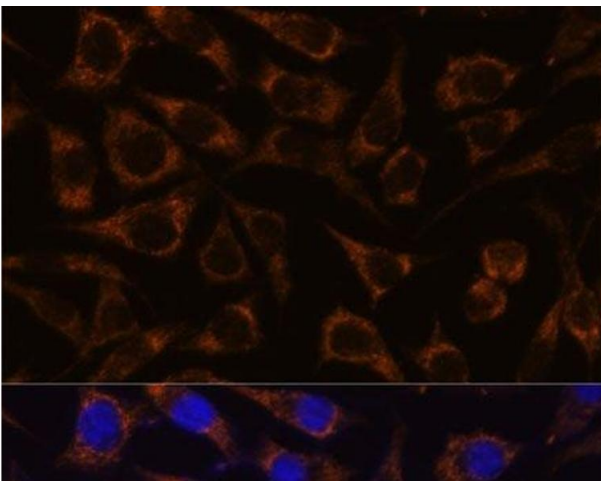
Preservative: Sodium azide

Precaution of Use: This product contains Sodium azide: a POISONOUS AND HAZARDOUS SUBSTANCE which should be handled by trained staff only.

Storage: -20 °C

Storage Comment: Store at -20°C. Avoid freeze / thaw cycles.

## Images



### Immunofluorescence

**Image 1.** Immunofluorescence analysis of L929 cells using GTPBP8 Polyclonal Antibody at dilution of 1:100. Blue: DAPI for nuclear staining.