

Datasheet for ABIN7258982  
**anti-HSD11B1 antibody**[Go to Product page](#)

## 1 Image

## Overview

Quantity:	200 µL
Target:	HSD11B1
Reactivity:	Mouse
Host:	Rabbit
Clonality:	Polyclonal
Conjugate:	This HSD11B1 antibody is un-conjugated
Application:	Western Blotting (WB)

## Product Details

Immunogen:	Recombinant fusion protein of human HSD11B1 (NP_005516.1).
Isotype:	IgG
Characteristics:	Polyclonal Antibody
Purification:	Affinity purification

## Target Details

Target:	HSD11B1
Alternative Name:	HSD11B1 ( <a href="#">HSD11B1 Products</a> )
Background:	The protein encoded by this gene is a microsomal enzyme that catalyzes the conversion of the stress hormone cortisol to the inactive metabolite cortisone. In addition, the encoded protein can catalyze the reverse reaction, the conversion of cortisone to cortisol. Too much cortisol can lead to central obesity, and a particular variation in this gene has been associated with obesity

## Target Details

and insulin resistance in children. Mutations in this gene and H6PD (hexose-6-phosphate dehydrogenase (glucose 1-dehydrogenase)) are the cause of cortisone reductase deficiency. Alternate splicing results in multiple transcript variants encoding the same protein.

Molecular Weight: Observed\_MW: 32 kDa  
Calculated\_MW: 32 kDa

Gene ID: 3290

UniProt: [P28845](#)

Pathways: [Metabolism of Steroid Hormones and Vitamin D](#), [Steroid Hormone Biosynthesis](#), [Regulation of Carbohydrate Metabolic Process](#)

## Application Details

Application Notes: WB 1:500-1:2000

Restrictions: For Research Use only

## Handling

Format: Liquid

Concentration: 1 mg/mL

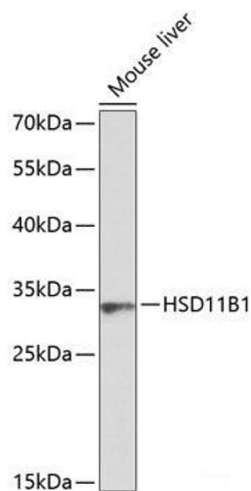
Buffer: PBS with 0.02 % sodium azide, 50 % glycerol, pH 7.3

Preservative: Sodium azide

Precaution of Use: This product contains Sodium azide: a POISONOUS AND HAZARDOUS SUBSTANCE which should be handled by trained staff only.

Storage: -20 °C

Storage Comment: Store at -20°C. Avoid freeze / thaw cycles.



Western Blotting

**Image 1.** Western blot analysis of extracts of Mouse liver using HSD11B1 Polyclonal Antibody at dilution of 1:1000.