

Datasheet for ABIN7258984

**anti-WBP11 antibody****2** Images[Go to Product page](#)

## Overview

Quantity:	200 µL
Target:	WBP11
Reactivity:	Human, Mouse
Host:	Rabbit
Clonality:	Polyclonal
Conjugate:	This WBP11 antibody is un-conjugated
Application:	Western Blotting (WB)

## Product Details

Immunogen:	Recombinant fusion protein of human WBP11 (NP_057396.1).
Isotype:	IgG
Characteristics:	Polyclonal Antibody
Purification:	Affinity purification

## Target Details

Target:	WBP11
Alternative Name:	WBP11 ( <a href="#">WBP11 Products</a> )
Background:	This gene encodes a nuclear protein, which colocalizes with mRNA splicing factors and intermediate filament-containing perinuclear networks. This protein has 95 % amino acid sequence identity to the mouse Wbp11 protein. It contains two proline-rich regions that bind to the WW domain of Npw38, a nuclear protein, and thus this protein is also called Npw38-binding

## Target Details

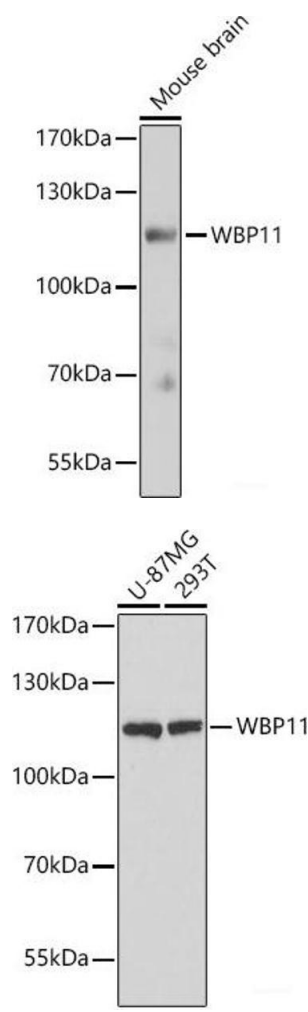
	protein NpwBP. The Npw38-NpwBP complex may function as a component of an mRNA factory in the nucleus.
Molecular Weight:	Observed_MW: 115 kDa Calculated_MW: 69 kDa
Gene ID:	51729
UniProt:	<a href="#">Q9Y2W2</a>

## Application Details

Application Notes:	WB 1:500-1:2000
Restrictions:	For Research Use only

## Handling

Format:	Liquid
Concentration:	1 mg/mL
Buffer:	PBS with 0.02 % sodium azide, 50 % glycerol, pH 7.3
Preservative:	Sodium azide
Precaution of Use:	This product contains Sodium azide: a POISONOUS AND HAZARDOUS SUBSTANCE which should be handled by trained staff only.
Storage:	-20 °C
Storage Comment:	Store at -20°C. Avoid freeze / thaw cycles.



Western Blotting

**Image 1.** Western blot analysis of extracts of Mouse brain using WBP11 Polyclonal Antibody at dilution of 1:3000.

Western Blotting

**Image 2.** Western blot analysis of extracts of various cell lines using WBP11 Polyclonal Antibody at dilution of 1:3000.