

Datasheet for ABIN725900
anti-RAGE antibody (AA 151-250)[4 Images](#)[5 Publications](#)[Go to Product page](#)

Overview

Quantity:	100 µL
Target:	RAGE (AGER)
Binding Specificity:	AA 151-250
Reactivity:	Human, Mouse, Rat
Host:	Rabbit
Clonality:	Polyclonal
Conjugate:	This RAGE antibody is un-conjugated
Application:	Western Blotting (WB), ELISA, Immunohistochemistry (Paraffin-embedded Sections) (IHC (p)), Immunoprecipitation (IP), Immunofluorescence (Cultured Cells) (IF (cc)), Immunocytochemistry (ICC), Immunofluorescence (Paraffin-embedded Sections) (IF (p)), Immunohistochemistry (Frozen Sections) (IHC (fro))

Product Details

Immunogen:	KLH conjugated synthetic peptide derived from rat AGER
Isotype:	IgG
Cross-Reactivity:	Human, Mouse, Rat
Purification:	Purified by Protein A.

Target Details

Target:	RAGE (AGER)
Alternative Name:	RAGE (AGER Products)

Target Details

Background:	<p>Synonyms: RAGE, Advanced glycosylation end product-specific receptor, Receptor for advanced glycosylation end products, Ager</p> <p>Background: Mediates interactions of advanced glycosylation end products (AGE). These are nonenzymatically glycosylated proteins which accumulate in vascular tissue in aging and at an accelerated rate in diabetes. Acts as a mediator of both acute and chronic vascular inflammation in conditions such as atherosclerosis and in particular as a complication of diabetes. AGE/RAGE signaling plays an important role in regulating the production/expression of TNF-alpha, oxidative stress, and endothelial dysfunction in type 2 diabetes. Interaction with S1A12 on endothelium, mononuclear phagocytes, and lymphocytes triggers cellular activation, with generation of key proinflammatory mediators. Receptor for amyloid beta peptide. Contributes to the translocation of amyloid-beta peptide (ABPP) across the cell membrane from the extracellular to the intracellular space in cortical neurons. ABPP-initiated RAGE signaling, especially stimulation of p38 mitogen-activated protein kinase (MAPK), has the capacity to drive a transport system delivering ABPP as a complex with RAGE to the intraneuronal space. Can also bind oligonucleotides (By similarity). Interaction with S1B after myocardial infarction may play a role in myocyte apoptosis by activating ERK1/2 and p53/TP53 signaling.</p>
Gene ID:	81722
UniProt:	Q63495
Pathways:	Carbohydrate Homeostasis , Toll-Like Receptors Cascades , Smooth Muscle Cell Migration , S100 Proteins

Application Details

Application Notes:	<p>WB 1:300-5000</p> <p>ELISA 1:500-1000</p> <p>FCM 1:20-100</p> <p>IHC-P 1:200-400</p> <p>IHC-F 1:100-500</p> <p>IF(IHC-P) 1:50-200</p> <p>IF(IHC-F) 1:50-200</p> <p>IF(ICC) 1:50-200</p> <p>IP(1-2 µg)</p> <p>ICC 1:100-500</p>
Restrictions:	For Research Use only

Handling

Format:	Liquid
Concentration:	1 µg/µL
Buffer:	0.01M TBS(pH 7.4) with 1 % BSA, 0.02 % Proclin300 and 50 % Glycerol.
Preservative:	ProClin
Precaution of Use:	This product contains ProClin: a POISONOUS AND HAZARDOUS SUBSTANCE, which should be handled by trained staff only.
Storage:	4 °C,-20 °C
Storage Comment:	Shipped at 4°C. Store at -20°C for one year. Avoid repeated freeze/thaw cycles.
Expiry Date:	12 months

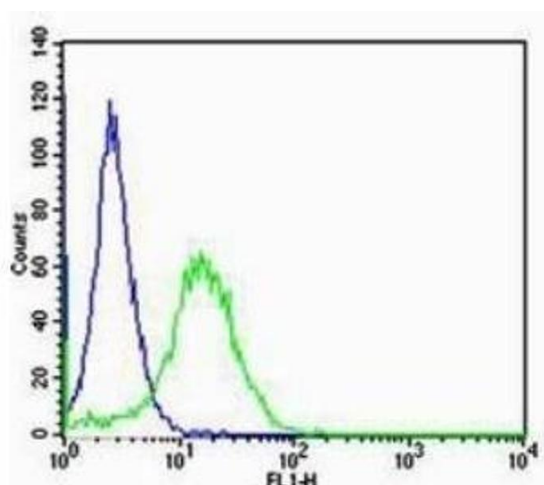
Publications

Product cited in:	<p>Fu, Shi, Song, Liu, Wang, Wang, Song, Song: "From the Cover: Tetrachlorobenzoquinone Exerts Neurological Proinflammatory Activity by Promoting HMGB1 Release, Which Induces TLR4 Clustering within the Lipid Raft." in: Toxicological sciences : an official journal of the Society of Toxicology, Vol. 153, Issue 2, pp. 303-15, (2016) (PubMed).</p> <p>Sun, Liu, Xue, Wang: "Effects of insulin combined with idebenone on blood-brain barrier permeability in diabetic rats." in: Journal of neuroscience research, Vol. 93, Issue 4, pp. 666-77, (2015) (PubMed).</p> <p>Zhu, Yao, Zhang, Dong, Yu, Sheng: "Anti-RAGE antibody ameliorates severe thermal injury in rats through regulating cellular immune function." in: Acta pharmacologica Sinica, Vol. 35, Issue 9, pp. 1167-76, (2014) (PubMed).</p> <p>Yu, Wu, Cai, Xiang, Zha, Fan, Guo, Ming, Liu: "Curcumin alleviates diabetic cardiomyopathy in experimental diabetic rats." in: PLoS ONE, Vol. 7, Issue 12, pp. e52013, (2012) (PubMed).</p> <p>Huang, Yao, Zhang, Dong, Yu, Sheng: "The effect of high-mobility group box 1 protein on activity of regulatory T cells after thermal injury in rats." in: Shock (Augusta, Ga.), Vol. 31, Issue 3, pp. 322-9, (2009) (PubMed).</p>
-------------------	---



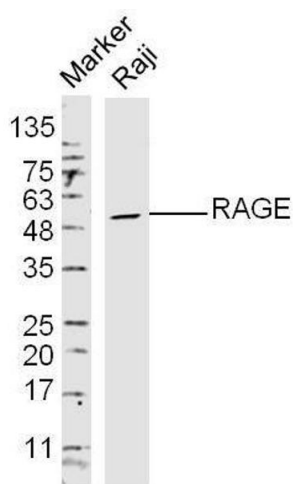
Immunohistochemistry

Image 1. Formalin-fixed and paraffin embedded: rat sciatic nerve labeled with Anti-AGER/RAGE Polyclonal Antibody, Unconjugated (ABIN725900) at 1:200 followed by conjugation to the secondary antibody and DAB staining



Flow Cytometry

Image 2. NIH/3T3 cells probed with Rabbit Anti-RAGE Polyclonal Antibody Alexa Fluor 488 Conjugated Secondary Antibody.



Western Blotting

Image 3. Raji Cells lysates probed with RAGE Polyclonal Antibody, unconjugated at 1:300 overnight at 4°C followed by a conjugated secondary antibody at 1:10000 for 60 minutes at 37°C.

Please check the [product details page](#) for more images. Overall 4 images are available for ABIN725900.