

Datasheet for ABIN7259008

anti-IBSP antibody[Go to Product page](#)**1** Image

Overview

Quantity:	200 µL
Target:	IBSP
Reactivity:	Human, Mouse, Rat
Host:	Rabbit
Clonality:	Polyclonal
Conjugate:	This IBSP antibody is un-conjugated
Application:	Western Blotting (WB)

Product Details

Immunogen:	A synthetic peptide of human IBSP (NP_004958.2).
Isotype:	IgG
Characteristics:	Polyclonal Antibody
Purification:	Affinity purification

Target Details

Target:	IBSP
Alternative Name:	IBSP (IBSP Products)
Background:	The protein encoded by this gene is a major structural protein of the bone matrix. It constitutes approximately 12 % of the noncollagenous proteins in human bone and is synthesized by skeletal-associated cell types, including hypertrophic chondrocytes, osteoblasts, osteocytes, and osteoclasts. The only extraskeletal site of its synthesis is the trophoblast. This protein

Target Details

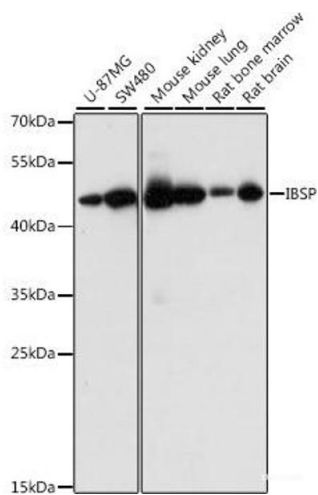
	binds to calcium and hydroxyapatite via its acidic amino acid clusters, and mediates cell attachment through an RGD sequence that recognizes the vitronectin receptor.
Molecular Weight:	Observed_MW: 45 kDa Calculated_MW: 35 kDa
Gene ID:	3381
UniProt:	P21815

Application Details

Application Notes:	WB 1:500-1:2000
Restrictions:	For Research Use only

Handling

Format:	Liquid
Concentration:	1 mg/mL
Buffer:	PBS with 0.02 % sodium azide, 50 % glycerol, pH 7.3
Preservative:	Sodium azide
Precaution of Use:	This product contains Sodium azide: a POISONOUS AND HAZARDOUS SUBSTANCE which should be handled by trained staff only.
Storage:	-20 °C
Storage Comment:	Store at -20°C. Avoid freeze / thaw cycles.



Western Blotting

Image 1. Western blot analysis of extracts of various cell lines using IBSP Polyclonal Antibody at dilution of 1:1000.