



[Go to Product page](#)

Datasheet for ABIN7259012
anti-CSNK1A1 antibody

2 Images

Overview

| | |
|--------------|--|
| Quantity: | 200 µL |
| Target: | CSNK1A1 |
| Reactivity: | Human, Rat, Mouse |
| Host: | Rabbit |
| Clonality: | Polyclonal |
| Conjugate: | This CSNK1A1 antibody is un-conjugated |
| Application: | Immunohistochemistry (IHC) |

Product Details

| | |
|------------------|--|
| Immunogen: | A synthetic peptide of human CSNK1A1 (NP_001020276.1). |
| Isotype: | IgG |
| Characteristics: | Polyclonal Antibody |
| Purification: | Affinity purification |

Target Details

| | |
|-------------------|---|
| Target: | CSNK1A1 |
| Alternative Name: | CSNK1A1 (CSNK1A1 Products) |
| Background: | CSNK1A1 (Casein Kinase 1 Alpha 1) is a Protein Coding gene. Diseases associated with CSNK1A1 include Enterobiasis and Gastric Cancer. Among its related pathways are Signaling by GPCR and S45 mutants of beta-catenin arent phosphorylated. Gene Ontology (GO) annotations related to this gene include transferase activity, transferring phosphorus-containing |

Target Details

groups and protein tyrosine kinase activity. An important paralog of this gene is CSNK1A1L.

Gene ID: 1452

UniProt: [P48729](#)

Pathways: [WNT Signaling](#), [Hedgehog Signaling](#)

Application Details

Application Notes: IHC 1:50-1:200

Restrictions: For Research Use only

Handling

Format: Liquid

Concentration: 1 mg/mL

Buffer: PBS with 0.02 % sodium azide, 50 % glycerol, pH 7.3

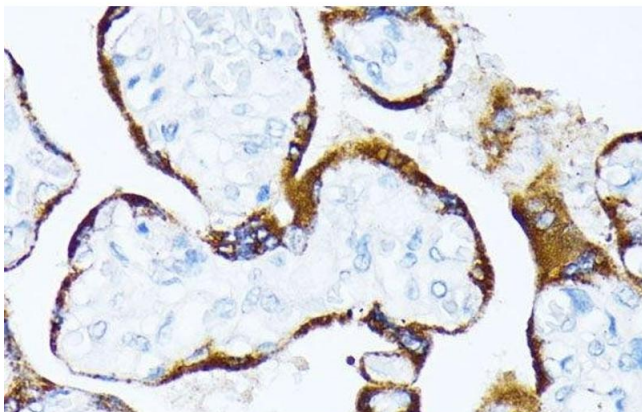
Preservative: Sodium azide

Precaution of Use: This product contains Sodium azide: a POISONOUS AND HAZARDOUS SUBSTANCE which should be handled by trained staff only.

Storage: -20 °C

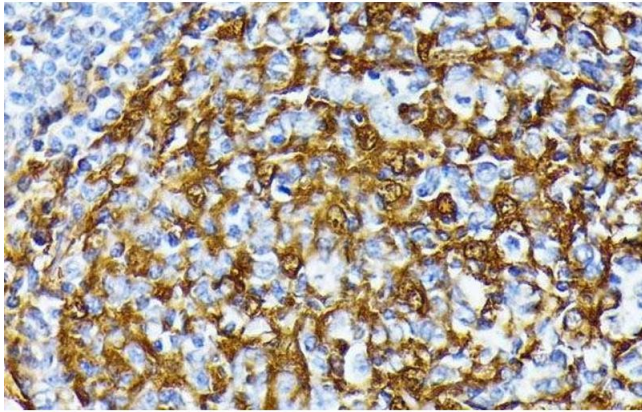
Storage Comment: Store at -20°C. Avoid freeze / thaw cycles.

Images



Immunohistochemistry (Paraffin-embedded Sections)

Image 1. Immunohistochemistry of paraffin-embedded Human placenta using CSNK1A1 Polyclonal Antibody at dilution of 1:100 (40x lens).



Immunohistochemistry (Paraffin-embedded Sections)

Image 2. Immunohistochemistry of paraffin-embedded Human tonsil using CSNK1A1 Polyclonal Antibody at dilution of 1:100 (40x lens).