

Datasheet for ABIN7259016

anti-RFC1 antibody**2** Images[Go to Product page](#)

Overview

Quantity:	200 µL
Target:	RFC1
Reactivity:	Human
Host:	Rabbit
Clonality:	Polyclonal
Conjugate:	This RFC1 antibody is un-conjugated
Application:	Immunofluorescence (IF)

Product Details

Immunogen:	Recombinant fusion protein of human RFC1 (NP_001191676.1).
Isotype:	IgG
Characteristics:	Polyclonal Antibody
Purification:	Affinity purification

Target Details

Target:	RFC1
Alternative Name:	RFC1 (RFC1 Products)
Background:	This gene encodes the large subunit of replication factor C, a five subunit DNA polymerase accessory protein, which is a DNA-dependent ATPase required for eukaryotic DNA replication and repair. The large subunit acts as an activator of DNA polymerases, binds to the 3' end of primers, and promotes coordinated synthesis of both strands. It may also have a role in

Target Details

telomere stability. Alternatively spliced transcript variants encoding different isoforms have been noted for this gene.

Gene ID: 5981

UniProt: [P35251](#)

Pathways: [Telomere Maintenance](#), [DNA Damage Repair](#), [DNA Replication](#), [Synthesis of DNA](#), [Dicarboxylic Acid Transport](#)

Application Details

Application Notes: IF 1:50-1:200

Restrictions: For Research Use only

Handling

Format: Liquid

Concentration: 1 mg/mL

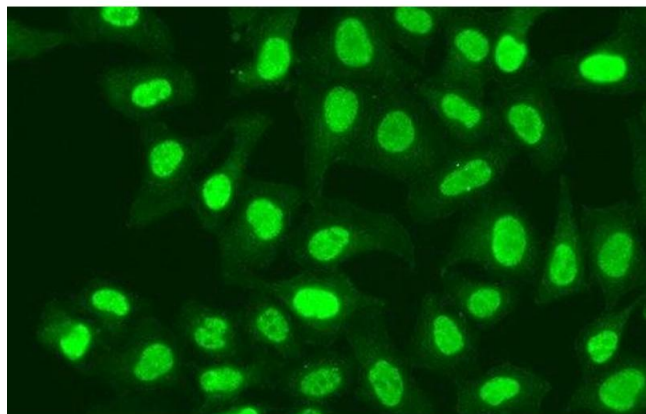
Buffer: PBS with 0.02 % sodium azide, 50 % glycerol, pH 7.3

Preservative: Sodium azide

Precaution of Use: This product contains Sodium azide: a POISONOUS AND HAZARDOUS SUBSTANCE which should be handled by trained staff only.

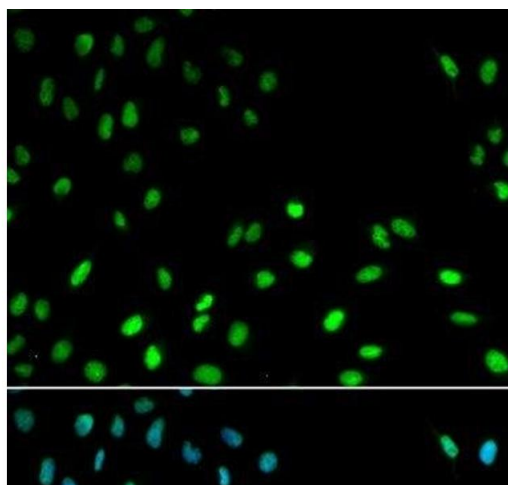
Storage: -20 °C

Storage Comment: Store at -20°C. Avoid freeze / thaw cycles.



Immunofluorescence

Image 1. Immunofluorescence analysis of A549 cells using RFC1 Polyclonal Antibody



Immunofluorescence

Image 2. Immunofluorescence analysis of MCF-7 cells using RFC1 Polyclonal Antibody