

Datasheet for ABIN7259028

anti-IL-1 beta antibody[Go to Product page](#)

4 Images

Overview

| | |
|--------------|--|
| Quantity: | 200 µL |
| Target: | IL-1 beta (IL1B) |
| Reactivity: | Human, Mouse, Rat |
| Host: | Rabbit |
| Clonality: | Polyclonal |
| Conjugate: | This IL-1 beta antibody is un-conjugated |
| Application: | Western Blotting (WB), Immunohistochemistry (IHC), Immunofluorescence (IF) |

Product Details

| | |
|------------------|---------------------------------------|
| Immunogen: | A synthetic peptide of human IL1 beta |
| Isotype: | IgG |
| Characteristics: | Polyclonal Antibody |
| Purification: | Affinity purification |

Target Details

| | |
|-------------------|---|
| Target: | IL-1 beta (IL1B) |
| Alternative Name: | IL1 beta (IL1B Products) |
| Background: | The protein encoded by this gene is a member of the interleukin 1 cytokine family. This cytokine is produced by activated macrophages as a proprotein, which is proteolytically processed to its active form by caspase 1 (CASP1/ICE). This cytokine is an important mediator of the inflammatory response, and is involved in a variety of cellular activities, including cell |

Target Details

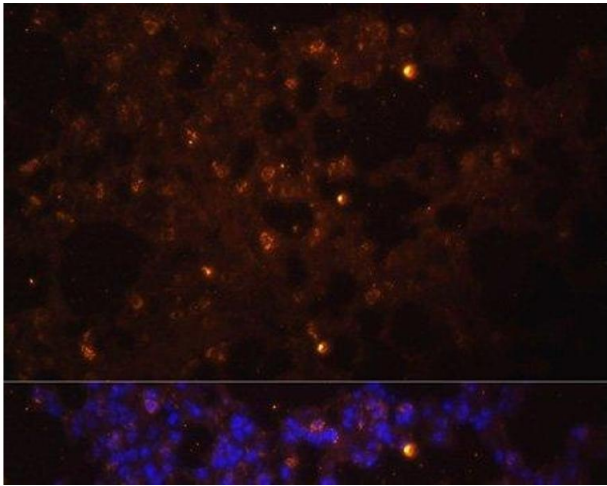
| | |
|-------------------|--|
| | proliferation, differentiation, and apoptosis. The induction of cyclooxygenase-2 (PTGS2/COX2) by this cytokine in the central nervous system (CNS) is found to contribute to inflammatory pain hypersensitivity. This gene and eight other interleukin 1 family genes form a cytokine gene cluster on chromosome 2. |
| Molecular Weight: | Observed_MW: 17 kDa/31 kDa Calculated_MW: 30 kDa |
| Gene ID: | 3553 |
| UniProt: | P01584 |
| Pathways: | NF-kappaB Signaling , Interferon-gamma Pathway , TLR Signaling , Negative Regulation of Hormone Secretion , Cellular Response to Molecule of Bacterial Origin , Carbohydrate Homeostasis , Glycosaminoglycan Metabolic Process , Myometrial Relaxation and Contraction , Regulation of Leukocyte Mediated Immunity , Positive Regulation of Immune Effector Process , Autophagy , Cancer Immune Checkpoints , Inflammasome |

Application Details

| | |
|--------------------|--|
| Application Notes: | WB 1:500-1:2000 IHC 1:50-1:200 IF 1:50-1:200 |
| Restrictions: | For Research Use only |

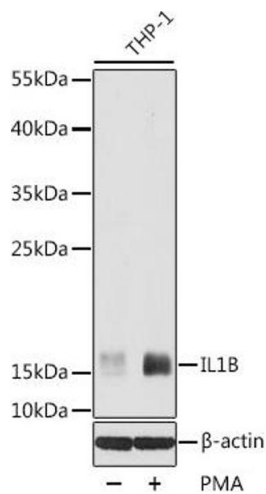
Handling

| | |
|--------------------|--|
| Format: | Liquid |
| Concentration: | 1 mg/mL |
| Buffer: | PBS with 0.02 % sodium azide, 50 % glycerol, pH 7.3 |
| Preservative: | Sodium azide |
| Precaution of Use: | This product contains Sodium azide: a POISONOUS AND HAZARDOUS SUBSTANCE which should be handled by trained staff only. |
| Storage: | -20 °C |
| Storage Comment: | Store at -20°C. Avoid freeze / thaw cycles. |



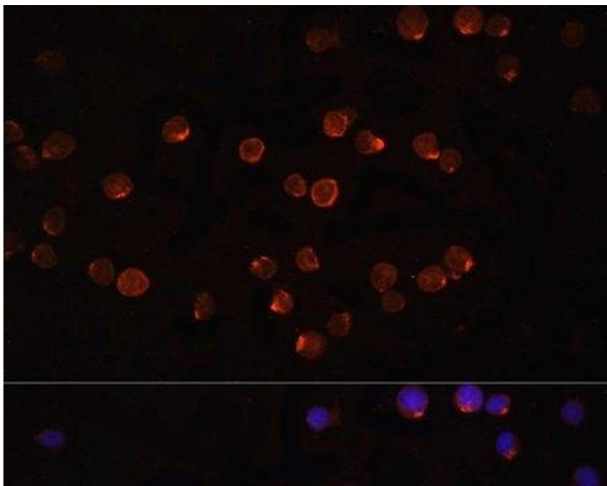
Immunofluorescence

Image 1. Immunofluorescence analysis of Mouse lung using IL1 beta Polyclonal Antibody at dilution of 1:100. Blue: DAPI for nuclear staining.



Western Blotting

Image 2. Western blot analysis of extracts of THP-1 cells using IL1 beta Polyclonal Antibody at dilution of 1:1000. THP-1 cells were treated by PMA (80 nM) at 37 °C for overnight.



Immunofluorescence

Image 3. Immunofluorescence analysis of THP-1 cells using IL1 beta Polyclonal Antibody at dilution of 1:100. Blue: DAPI for nuclear staining.

Please check the [product details page](#) for more images. Overall 4 images are available for ABIN7259028.