

Datasheet for ABIN7259064
anti-ARL3 antibody



[Go to Product page](#)

2 Images

Overview

| | |
|--------------|-------------------------------------|
| Quantity: | 200 µL |
| Target: | ARL3 |
| Reactivity: | Human, Mouse, Rat |
| Host: | Rabbit |
| Clonality: | Polyclonal |
| Conjugate: | This ARL3 antibody is un-conjugated |
| Application: | Immunofluorescence (IF) |

Product Details

| | |
|------------------|---|
| Immunogen: | Recombinant fusion protein of human ARL3 (NP_004302.1). |
| Isotype: | IgG |
| Characteristics: | Polyclonal Antibody |
| Purification: | Affinity purification |

Target Details

| | |
|-------------------|--|
| Target: | ARL3 |
| Alternative Name: | ARL3 (ARL3 Products) |
| Background: | ADP-ribosylation factor-like 3 is a member of the ADP-ribosylation factor family of GTP-binding proteins. ARL3 binds guanine nucleotides but lacks ADP-ribosylation factor activity. |
| Gene ID: | 403 |

Target Details

UniProt: [P36405](#)

Application Details

Application Notes: IF 1:50-1:100

Restrictions: For Research Use only

Handling

Format: Liquid

Concentration: 1 mg/mL

Buffer: PBS with 0.02 % sodium azide, 50 % glycerol, pH 7.3

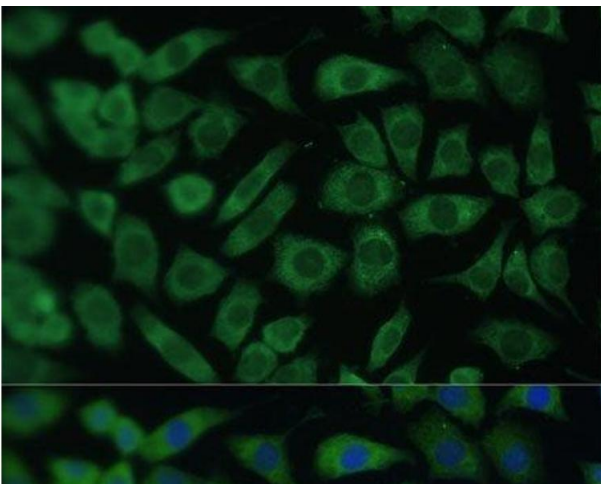
Preservative: Sodium azide

Precaution of Use: This product contains Sodium azide: a POISONOUS AND HAZARDOUS SUBSTANCE which should be handled by trained staff only.

Storage: -20 °C

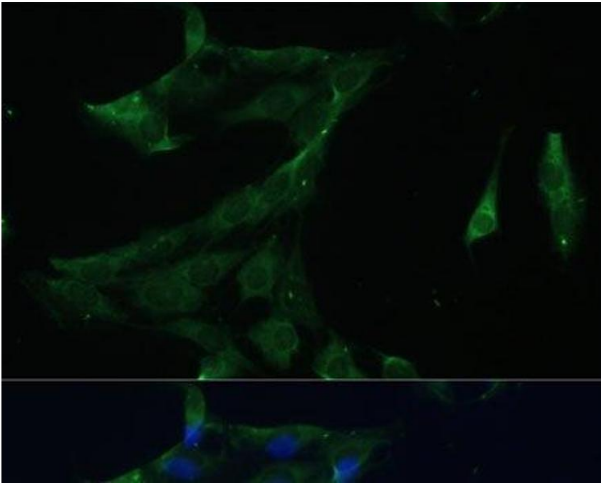
Storage Comment: Store at -20°C. Avoid freeze / thaw cycles.

Images



Immunofluorescence

Image 1. Immunofluorescence analysis of L929 cells using ARL3 Polyclonal Antibody at dilution of 1:100 (40x lens). Blue: DAPI for nuclear staining.



Immunofluorescence

Image 2. Immunofluorescence analysis of C6 cells using ARL3 Polyclonal Antibody at dilution of 1:100 (40x lens).
Blue: DAPI for nuclear staining.