



Datasheet for ABIN7259068 anti-HMGA1 antibody



[Go to Product page](#)

2 Images

Overview

Quantity:	200 µL
Target:	HMGA1
Reactivity:	Human
Host:	Rabbit
Clonality:	Polyclonal
Conjugate:	This HMGA1 antibody is un-conjugated
Application:	Immunohistochemistry (IHC), Immunofluorescence (IF)

Product Details

Immunogen:	A synthetic peptide of human HMGA1 (NP_665908.1).
Isotype:	IgG
Characteristics:	Polyclonal Antibody
Purification:	Affinity purification

Target Details

Target:	HMGA1
Alternative Name:	HMGA1 (HMGA1 Products)
Background:	This gene encodes a chromatin-associated protein involved in the regulation of gene transcription, integration of retroviruses into chromosomes, and the metastatic progression of cancer cells. The encoded protein preferentially binds to the minor groove of AT-rich regions in double-stranded DNA. Multiple transcript variants encoding different isoforms have been found

Target Details

for this gene. Pseudogenes of this gene have been identified on multiple chromosomes.

Gene ID: 3159

UniProt: [P17096](#)

Pathways: [Nuclear Hormone Receptor Binding, Autophagy](#)

Application Details

Application Notes: IHC 1:50-1:200 IF 1:50-1:200

Restrictions: For Research Use only

Handling

Format: Liquid

Concentration: 1 mg/mL

Buffer: PBS with 0.02 % sodium azide, 50 % glycerol, pH 7.3

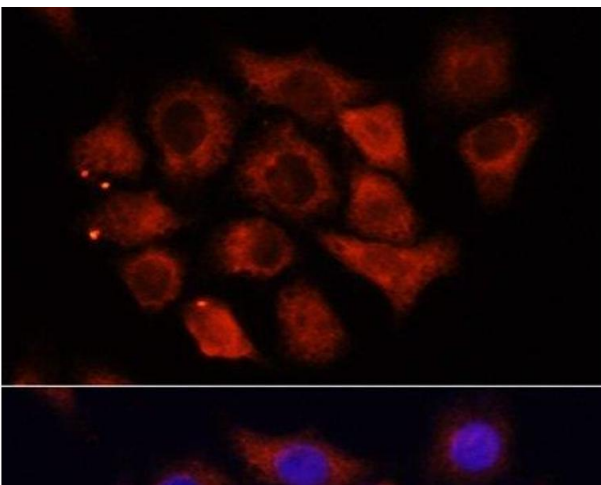
Preservative: Sodium azide

Precaution of Use: This product contains Sodium azide: a POISONOUS AND HAZARDOUS SUBSTANCE which should be handled by trained staff only.

Storage: -20 °C

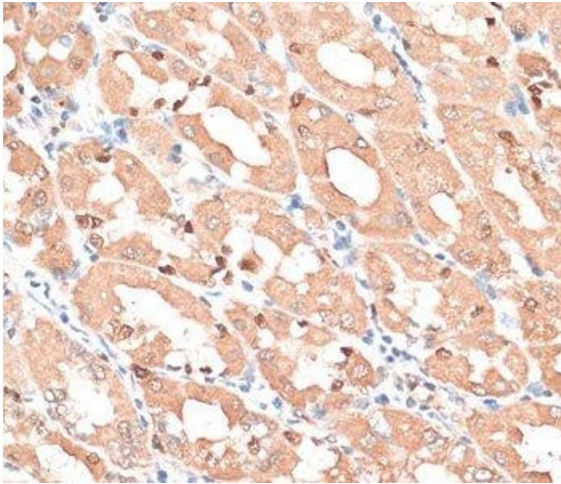
Storage Comment: Store at -20°C. Avoid freeze / thaw cycles.

Images



Immunofluorescence

Image 1. Immunofluorescence analysis of HeLa cells using HMGA1 Polyclonal Antibody at dilution of 1:100 (40x lens). Blue: DAPI for nuclear staining.



Immunohistochemistry (Paraffin-embedded Sections)

Image 2. Immunohistochemistry of paraffin-embedded Human stomach using HMGA1 Polyclonal Antibody at dilution of 1:100 (40x lens).