



Datasheet for ABIN7259086
anti-ENO3 antibody



[Go to Product page](#)

3 Images

Overview

Quantity:	200 µL
Target:	ENO3
Reactivity:	Human, Mouse, Rat
Host:	Rabbit
Clonality:	Polyclonal
Conjugate:	This ENO3 antibody is un-conjugated
Application:	Immunofluorescence (IF)

Product Details

Immunogen:	Recombinant fusion protein of human ENO3 (NP_001967.3).
Isotype:	IgG
Characteristics:	Polyclonal Antibody
Purification:	Affinity purification

Target Details

Target:	ENO3
Alternative Name:	ENO3 (ENO3 Products)
Background:	This gene encodes one of the three enolase isoenzymes found in mammals. This isoenzyme is found in skeletal muscle cells in the adult where it may play a role in muscle development and regeneration. A switch from alpha enolase to beta enolase occurs in muscle tissue during development in rodents. Mutations in this gene have be associated glycogen storage disease.

Target Details

Alternatively spliced transcript variants encoding different isoforms have been described.

Gene ID: 2027

UniProt: [P13929](#)

Application Details

Application Notes: IF 1:50-1:200

Restrictions: For Research Use only

Handling

Format: Liquid

Concentration: 1 mg/mL

Buffer: PBS with 0.02 % sodium azide, 50 % glycerol, pH 7.3

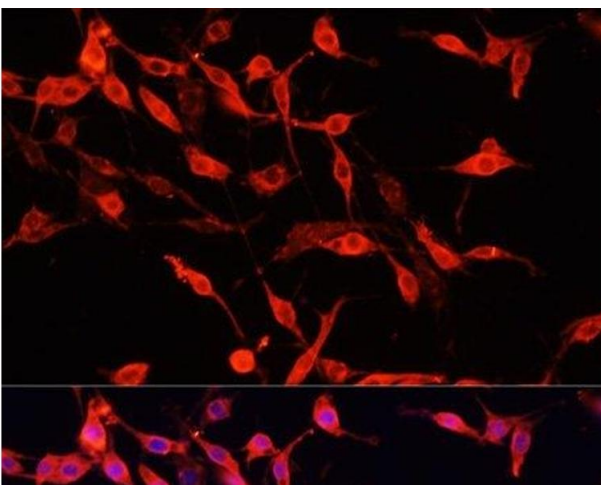
Preservative: Sodium azide

Precaution of Use: This product contains Sodium azide: a POISONOUS AND HAZARDOUS SUBSTANCE which should be handled by trained staff only.

Storage: -20 °C

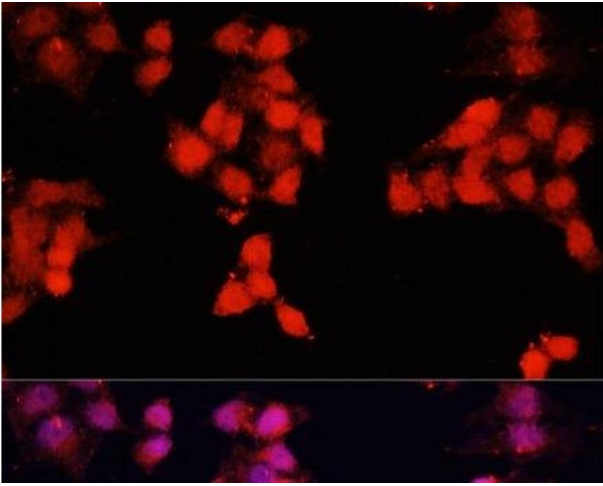
Storage Comment: Store at -20°C. Avoid freeze / thaw cycles.

Images



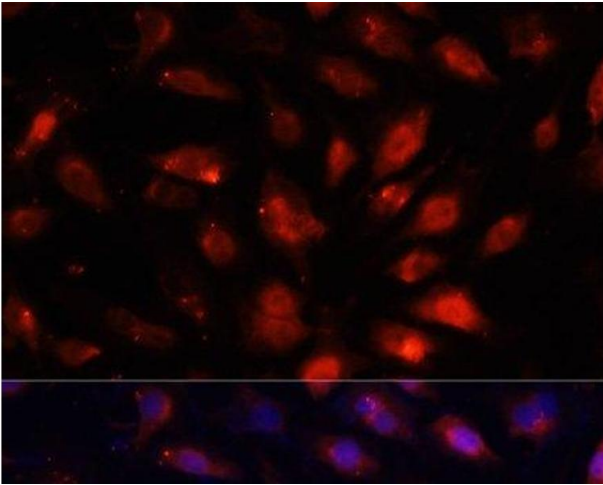
Immunofluorescence

Image 1. Immunofluorescence analysis of PC-12 cells using ENO3 Polyclonal Antibody at dilution of 1:100. Blue: DAPI for nuclear staining.



Immunofluorescence

Image 2. Immunofluorescence analysis of HeLa cells using ENO3 Polyclonal Antibody at dilution of 1:100. Blue: DAPI for nuclear staining.



Immunofluorescence

Image 3. Immunofluorescence analysis of NIH/3T3 cells using ENO3 Polyclonal Antibody at dilution of 1:100. Blue: DAPI for nuclear staining.