

Datasheet for ABIN7259090

**anti-FKBP1B antibody**

4 Images

[Go to Product page](#)

## Overview

|              |   |
|--------------|---|
| Quantity:    | 200 µL  |
| Target:      | FKBP1B  |
| Reactivity:  | Human, Mouse, Rat                                   |
| Host:        | Rabbit  |
| Clonality:   | Polyclonal  |
| Conjugate:   | This FKBP1B antibody is un-conjugated               |
| Application: | Immunohistochemistry (IHC), Immunofluorescence (IF) |

## Product Details

|                  |  |
|------------------|--|
| Immunogen:       | A synthetic peptide of human FKBP1B (NP_473374.1). |
| Isotype:         | IgG  |
| Characteristics: | Polyclonal Antibody                                |
| Purification:    | Affinity purification                              |

## Target Details

|                   |  |
|-------------------|--|
| Target:           | FKBP1B   |
| Alternative Name: | FKBP1B ( <a href="#">FKBP1B Products</a> )   |
| Background:       | <p>The protein encoded by this gene is a member of the immunophilin protein family, which play a role in immunoregulation and basic cellular processes involving protein folding and trafficking.</p> <p>This encoded protein is a cis-trans prolyl isomerase that binds the immunosuppressants FK506 and rapamycin. It is highly similar to the FK506-binding protein 1A. Its physiological role is</p> |

## Target Details

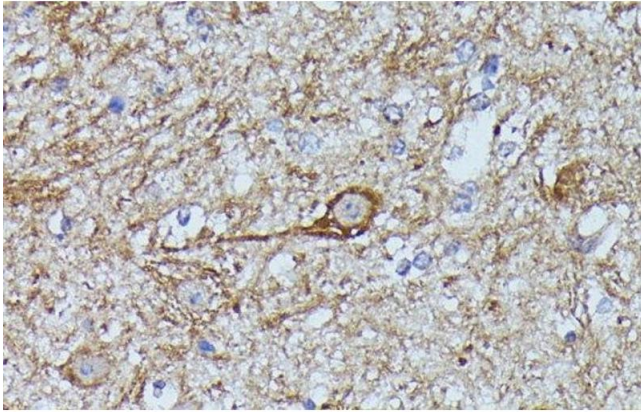
|           |   |
|-----------|---|
|           | thought to be in excitation-contraction coupling in cardiac muscle. There are two alternatively spliced transcript variants of this gene encoding different isoforms. |
| Gene ID:  | 2281  |
| UniProt:  | <a href="#">P68106</a>  |
| Pathways: | <a href="#">Hormone Transport</a> , <a href="#">Negative Regulation of Hormone Secretion</a> , <a href="#">Negative Regulation of Transporter Activity</a>            |

## Application Details

|                    |                              |
|--------------------|------------------------------|
| Application Notes: | IHC 1:50-1:100 IF 1:50-1:100 |
| Restrictions:      | For Research Use only        |

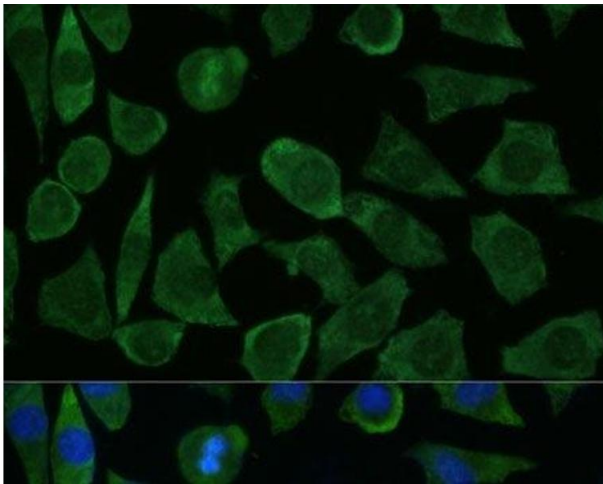
## Handling

|                    |  |
|--------------------|--|
| Format:            | Liquid   |
| Concentration:     | 1 mg/mL  |
| Buffer:            | PBS with 0.02 % sodium azide, 50 % glycerol, pH 7.3  |
| Preservative:      | Sodium azide   |
| Precaution of Use: | This product contains Sodium azide: a POISONOUS AND HAZARDOUS SUBSTANCE which should be handled by trained staff only. |
| Storage:           | -20 °C   |
| Storage Comment:   | Store at -20°C. Avoid freeze / thaw cycles.  |



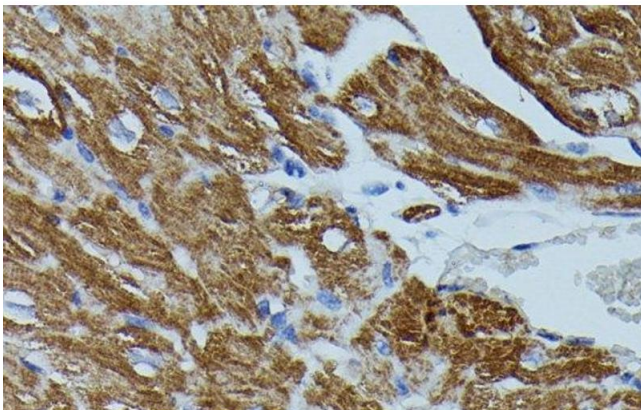
#### Immunohistochemistry (Paraffin-embedded Sections)

**Image 1.** Immunohistochemistry of paraffin-embedded Mouse spinal cord using FKBP1B Polyclonal Antibody at dilution of 1:100 (40x lens).



#### Immunofluorescence

**Image 2.** Immunofluorescence analysis of L929 cells using FKBP1B Polyclonal Antibody at dilution of 1:100 (40x lens). Blue: DAPI for nuclear staining.



#### Immunohistochemistry (Paraffin-embedded Sections)

**Image 3.** Immunohistochemistry of paraffin-embedded Mouse heart using FKBP1B Polyclonal Antibody at dilution of 1:100 (40x lens).

Please check the [product details page](#) for more images. Overall 4 images are available for ABIN7259090.