

Datasheet for ABIN7259096

**anti-IFI35 antibody**[Go to Product page](#)**1** Image

## Overview

Quantity:	200 µL
Target:	IFI35
Reactivity:	Human, Mouse
Host:	Rabbit
Clonality:	Polyclonal
Conjugate:	This IFI35 antibody is un-conjugated
Application:	Western Blotting (WB)

## Product Details

Immunogen:	Recombinant fusion protein of human IFI35 (NP_005524.2).
Isotype:	IgG
Characteristics:	Polyclonal Antibody
Purification:	Affinity purification

## Target Details

Target:	IFI35
Alternative Name:	IFI35 ( <a href="#">IFI35 Products</a> )
Background:	The Interferon family of proteins are able to alter the expression of a variety of target genes, thereby controlling various events within the cell. IFI-35 (Interferon-induced 35 kDa protein), also known as IFP35, is a 286 amino acid interferon-induced protein. Localized to the nucleus and expressed in macrophages, fibroblasts and epithelial cells, IFI-35 is a leucine zipper protein

## Target Details

that can form homodimers, but, unlike most leucine zipper proteins, cannot bind DNA. Upon induction by IFN- $\alpha$ , IFI-35 associates with Nmi (N-Myc-interacting protein), resulting in the formation of a high molecular weight complex that is thought to play a role in IFN- $\alpha$  signaling and cellular responses. Once complexed with Nmi, IFI-35 is unable to be degraded by the proteasome, suggesting that IFI-35 is protected from degradation only when needed by IFN- $\alpha$ . Two isoforms of IFI-35 exist due to alternative splicing events.

Molecular Weight:	Observed_MW: 35 kDa Calculated_MW: 31 kDa
-------------------	--

Gene ID:	3430
----------	------

UniProt:	<a href="#">P80217</a>
----------	------------------------

## Application Details

Application Notes:	WB 1:500-1:2000
--------------------	-----------------

Restrictions:	For Research Use only
---------------	-----------------------

## Handling

Format:	Liquid
---------	--------

Concentration:	1 mg/mL
----------------	---------

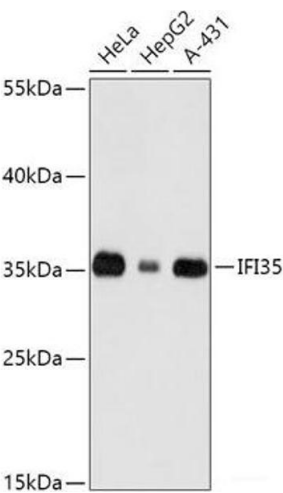
Buffer:	PBS with 0.02 % sodium azide, 50 % glycerol, pH 7.3
---------	---

Preservative:	Sodium azide
---------------	--------------

Precaution of Use:	This product contains Sodium azide: a POISONOUS AND HAZARDOUS SUBSTANCE which should be handled by trained staff only.
--------------------	--

Storage:	-20 °C
----------	--------

Storage Comment:	Store at -20°C. Avoid freeze / thaw cycles.
------------------	---



Western Blotting

**Image 1.** Western blot analysis of extracts of various cell lines using IFI35 Polyclonal Antibody at dilution of 1:1000.