

Datasheet for ABIN7259098

anti-CXCR1 antibody

4 Images

[Go to Product page](#)

Overview

Quantity:	200 µL
Target:	CXCR1
Reactivity:	Human, Rat, Mouse
Host:	Rabbit
Clonality:	Polyclonal
Conjugate:	This CXCR1 antibody is un-conjugated
Application:	Western Blotting (WB), Immunohistochemistry (IHC)

Product Details

Immunogen:	A synthetic peptide of human CXCR1 (NP_000625.1).
Isotype:	IgG
Characteristics:	Polyclonal Antibody
Purification:	Affinity purification

Target Details

Target:	CXCR1
Alternative Name:	CXCR1 (CXCR1 Products)
Background:	The protein encoded by this gene is a member of the G-protein-coupled receptor family. This protein is a receptor for interleukin 8 (IL8). It binds to IL8 with high affinity, and transduces the signal through a G-protein activated second messenger system. Knockout studies in mice suggested that this protein inhibits embryonic oligodendrocyte precursor migration in

Target Details

developing spinal cord. This gene, IL8RB, a gene encoding another high affinity IL8 receptor, as well as IL8RBP, a pseudogene of IL8RB, form a gene cluster in a region mapped to chromosome 2q33-q36.

Molecular Weight: Observed_MW: 70 kDa
Calculated_MW: 39 kDa

Gene ID: 3577

UniProt: [P25024](#)

Pathways: [cAMP Metabolic Process](#)

Application Details

Application Notes: WB 1:500-1:2000 IHC 1:50-1:200

Restrictions: For Research Use only

Handling

Format: Liquid

Concentration: 1 mg/mL

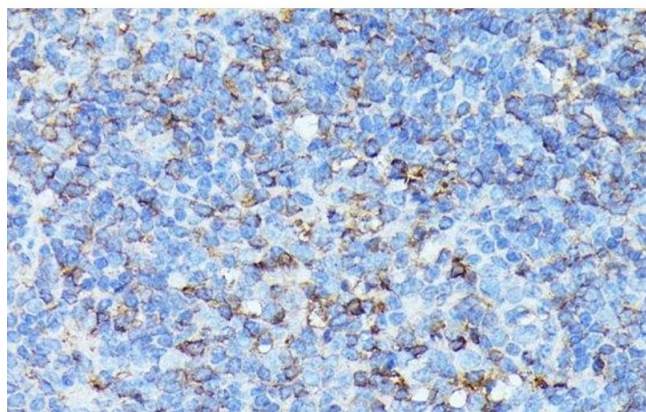
Buffer: PBS with 0.02 % sodium azide, 50 % glycerol, pH 7.3

Preservative: Sodium azide

Precaution of Use: This product contains Sodium azide: a POISONOUS AND HAZARDOUS SUBSTANCE which should be handled by trained staff only.

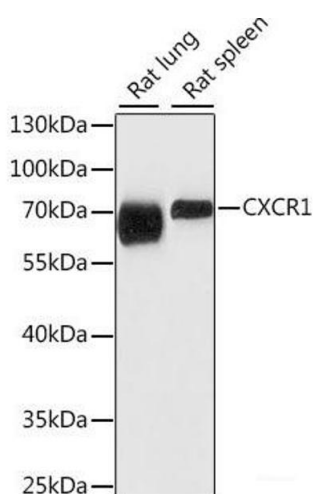
Storage: -20 °C

Storage Comment: Store at -20°C. Avoid freeze / thaw cycles.



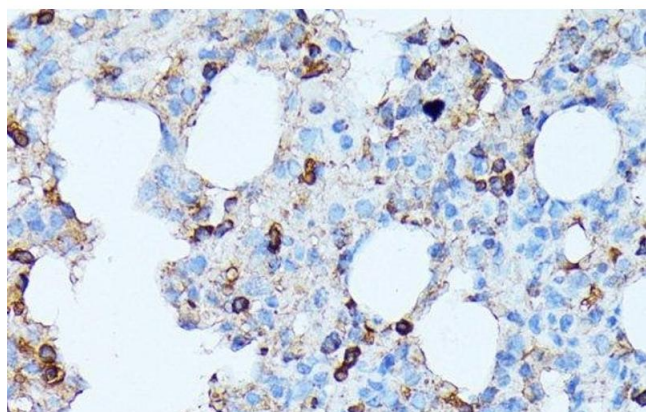
Immunohistochemistry (Paraffin-embedded Sections)

Image 1. Immunohistochemistry of paraffin-embedded Mouse spleen using CXCR1 Polyclonal Antibody at dilution of 1:100 (40x lens).



Western Blotting

Image 2. Western blot analysis of extracts of various cell lines using CXCR1 Polyclonal Antibody at dilution of 1:1000.



Immunohistochemistry (Paraffin-embedded Sections)

Image 3. Immunohistochemistry of paraffin-embedded Rat lung using CXCR1 Polyclonal Antibody at dilution of 1:100 (40x lens).

Please check the [product details page](#) for more images. Overall 4 images are available for ABIN7259098.