



Datasheet for ABIN7259110
anti-MAD2L1 antibody



[Go to Product page](#)

2 Images

Overview

Quantity:	200 µL
Target:	MAD2L1
Reactivity:	Human, Mouse, Rat
Host:	Rabbit
Clonality:	Polyclonal
Conjugate:	This MAD2L1 antibody is un-conjugated
Application:	Immunohistochemistry (IHC), Immunofluorescence (IF)

Product Details

Immunogen:	Recombinant fusion protein of human MAD2L1 (NP_002349.1).
Isotype:	IgG
Characteristics:	Polyclonal Antibody
Purification:	Affinity purification

Target Details

Target:	MAD2L1
Alternative Name:	MAD2L1 (MAD2L1 Products)
Background:	MAD2L1 is a component of the mitotic spindle assembly checkpoint that prevents the onset of anaphase until all chromosomes are properly aligned at the metaphase plate. MAD2L1 is related to the MAD2L2 gene located on chromosome 1. A MAD2 pseudogene has been mapped to chromosome 14.

Target Details

Gene ID: 4085

UniProt: [Q13257](#)

Application Details

Application Notes: IHC 1:50-1:200 IF 1:50-1:200

Restrictions: For Research Use only

Handling

Format: Liquid

Concentration: 1 mg/mL

Buffer: PBS with 0.02 % sodium azide, 50 % glycerol, pH 7.3

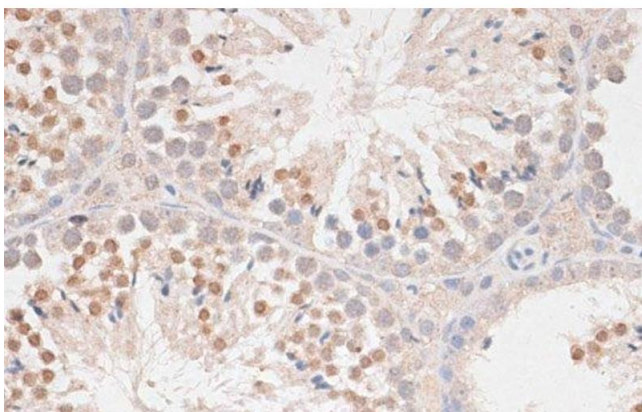
Preservative: Sodium azide

Precaution of Use: This product contains Sodium azide: a POISONOUS AND HAZARDOUS SUBSTANCE which should be handled by trained staff only.

Storage: -20 °C

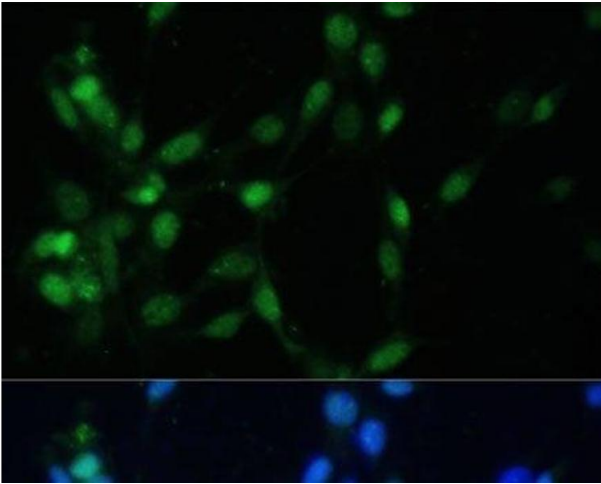
Storage Comment: Store at -20°C. Avoid freeze / thaw cycles.

Images



Immunohistochemistry (Paraffin-embedded Sections)

Image 1. Immunohistochemistry of paraffin-embedded Mouse testis using MAD2L1 Polyclonal Antibody at dilution of 1:100 (40x lens).



Immunofluorescence

Image 2. Immunofluorescence analysis of NIH-3T3 cells using MAD2L1 Polyclonal Antibody at dilution of 1:100 (40x lens). Blue: DAPI for nuclear staining.