

Datasheet for ABIN7259118
anti-Cathelicidin antibody

4 Images

[Go to Product page](#)

Overview

Quantity:	200 µL
Target:	Cathelicidin (CAMP)
Reactivity:	Human, Mouse
Host:	Rabbit
Clonality:	Polyclonal
Conjugate:	This Cathelicidin antibody is un-conjugated
Application:	Immunohistochemistry (IHC)

Product Details

Immunogen:	Recombinant fusion protein of human CAMP (NP_004336.3).
Isotype:	IgG
Characteristics:	Polyclonal Antibody
Purification:	Affinity purification

Target Details

Target:	Cathelicidin (CAMP)
Alternative Name:	CAMP (CAMP Products)
Target Type:	Chemical
Background:	This gene encodes a member of an antimicrobial peptide family, characterized by a highly conserved N-terminal signal peptide containing a cathelin domain and a structurally variable

Target Details

cationic antimicrobial peptide, which is produced by extracellular proteolysis from the C-terminus. In addition to its antibacterial, antifungal, and antiviral activities, the encoded protein functions in cell chemotaxis, immune mediator induction, and inflammatory response regulation.

Gene ID: 820

UniProt: [P49913](#)

Pathways: [Cellular Response to Molecule of Bacterial Origin](#)

Application Details

Application Notes: IHC 1:50-1:200

Restrictions: For Research Use only

Handling

Format: Liquid

Concentration: 1 mg/mL

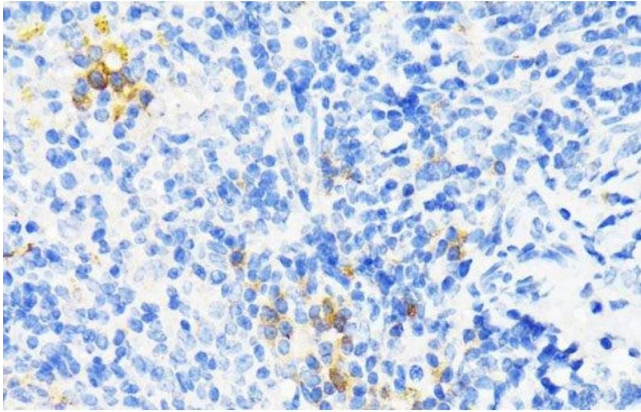
Buffer: PBS with 0.02 % sodium azide, 50 % glycerol, pH 7.3

Preservative: Sodium azide

Precaution of Use: This product contains Sodium azide: a POISONOUS AND HAZARDOUS SUBSTANCE which should be handled by trained staff only.

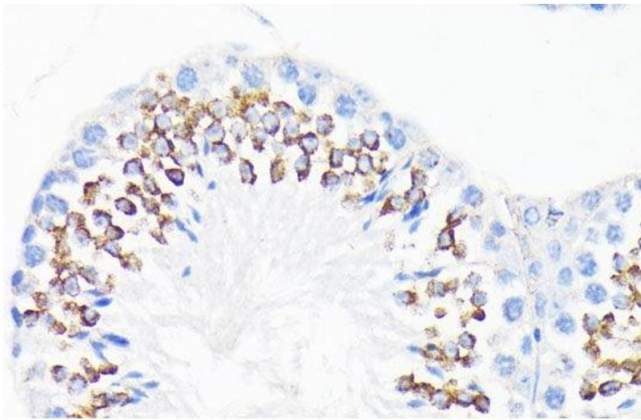
Storage: -20 °C

Storage Comment: Store at -20°C. Avoid freeze / thaw cycles.



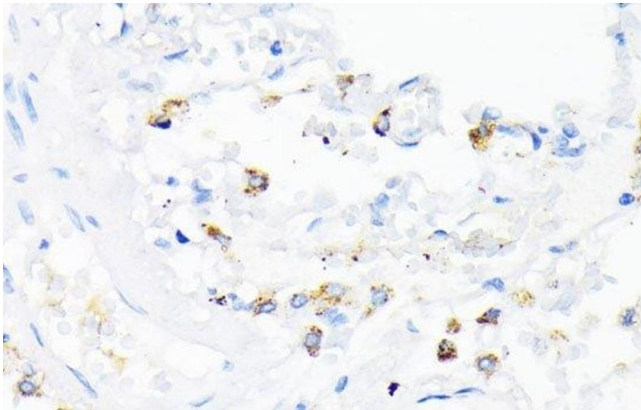
Immunohistochemistry (Paraffin-embedded Sections)

Image 1. Immunohistochemistry of paraffin-embedded Mouse spleen using CAMP Polyclonal Antibody at dilution of 1:200 (40x lens).



Immunohistochemistry (Paraffin-embedded Sections)

Image 2. Immunohistochemistry of paraffin-embedded Mouse testis using CAMP Polyclonal Antibody at dilution of 1:200 (40x lens).



Immunohistochemistry (Paraffin-embedded Sections)

Image 3. Immunohistochemistry of paraffin-embedded Human lung using CAMP Polyclonal Antibody at dilution of 1:200 (40x lens).

Please check the [product details page](#) for more images. Overall 4 images are available for ABIN7259118.