

Datasheet for ABIN7259144
anti-Reticulon 1 antibody[Go to Product page](#)

1 Image

Overview

Quantity:	200 µL
Target:	Reticulon 1 (RTN1)
Reactivity:	Mouse
Host:	Rabbit
Clonality:	Polyclonal
Conjugate:	This Reticulon 1 antibody is un-conjugated
Application:	Western Blotting (WB)

Product Details

Immunogen:	Recombinant fusion protein of human RTN1 (NP_066959.1).
Isotype:	IgG
Characteristics:	Polyclonal Antibody
Purification:	Affinity purification

Target Details

Target:	Reticulon 1 (RTN1)
Alternative Name:	RTN1 (RTN1 Products)
Background:	This gene belongs to the family of reticulon encoding genes. Reticulons are associated with the endoplasmic reticulum, and are involved in neuroendocrine secretion or in membrane trafficking in neuroendocrine cells. This gene is considered to be a specific marker for neurological diseases and cancer, and is a potential molecular target for therapy. Alternative

Target Details

splicing results in multiple transcript variants.

Molecular Weight: Observed_MW: 24 kDa
Calculated_MW: 23 kDa/38 kDa/83 kDa

Gene ID: 6252

UniProt: [Q16799](#)

Application Details

Application Notes: WB 1:500-1:2000

Restrictions: For Research Use only

Handling

Format: Liquid

Concentration: 1 mg/mL

Buffer: PBS with 0.02 % sodium azide, 50 % glycerol, pH 7.3

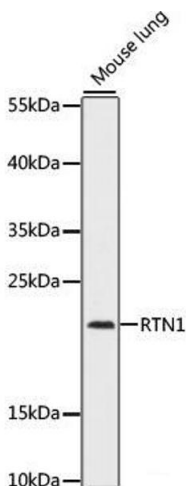
Preservative: Sodium azide

Precaution of Use: This product contains Sodium azide: a POISONOUS AND HAZARDOUS SUBSTANCE which should be handled by trained staff only.

Storage: -20 °C

Storage Comment: Store at -20°C. Avoid freeze / thaw cycles.

Images



Western Blotting

Image 1. Western blot analysis of extracts of Mouse lung using RTN1 Polyclonal Antibody at dilution of 1:1000.