

Datasheet for ABIN7259148

anti-SCD antibody**3** Images[Go to Product page](#)

Overview

Quantity:	200 µL
Target:	SCD
Reactivity:	Human, Mouse, Rat
Host:	Rabbit
Clonality:	Polyclonal
Conjugate:	This SCD antibody is un-conjugated
Application:	Western Blotting (WB), Immunofluorescence (IF)

Product Details

Immunogen:	A synthetic peptide of human SCD (NP_005054.3).
Isotype:	IgG
Specificity:	This antibody ist KO validated.
Characteristics:	Polyclonal Antibody
Purification:	Affinity purification
Grade:	KO Validated

Target Details

Target:	SCD
Alternative Name:	SCD (SCD Products)
Background:	This gene encodes an enzyme involved in fatty acid biosynthesis, primarily the synthesis of

Target Details

oleic acid. The protein belongs to the fatty acid desaturase family and is an integral membrane protein located in the endoplasmic reticulum. Transcripts of approximately 3.9 and 5.2 kb, differing only by alternative polyadenylation signals, have been detected. A gene encoding a similar enzyme is located on chromosome 4 and a pseudogene of this gene is located on chromosome 17.

Molecular Weight: Observed_MW: 38 kDa
Calculated_MW: 41 kDa

Gene ID: 6319

UniProt: [O00767](#)

Pathways: [Brown Fat Cell Differentiation](#)

Application Details

Application Notes: WB 1:500-1:2000 IF 1:50-1:100

Restrictions: For Research Use only

Handling

Format: Liquid

Concentration: 1 mg/mL

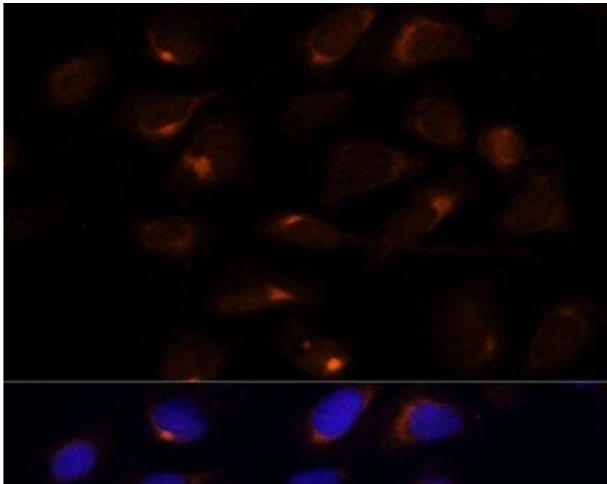
Buffer: PBS with 0.02 % sodium azide, 50 % glycerol, pH 7.3

Preservative: Sodium azide

Precaution of Use: This product contains Sodium azide: a POISONOUS AND HAZARDOUS SUBSTANCE which should be handled by trained staff only.

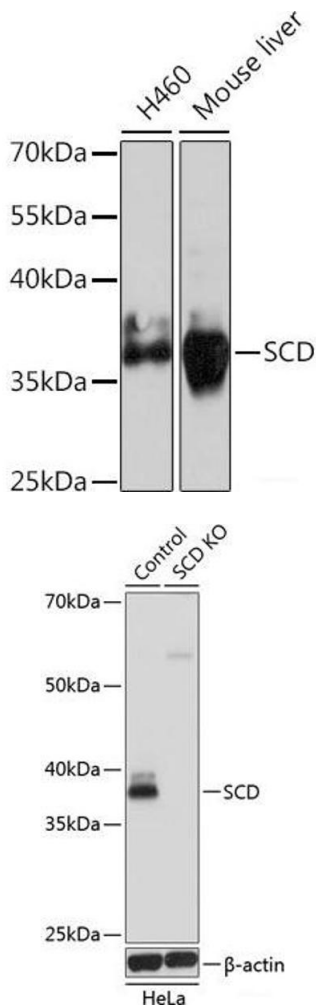
Storage: -20 °C

Storage Comment: Store at -20°C. Avoid freeze / thaw cycles.



Immunofluorescence

Image 1. Immunofluorescence analysis of U-2 OS cells using SCD Polyclonal Antibody at dilution of 1:100 (40x lens). Blue: DAPI for nuclear staining.



Western Blotting

Image 2. Western blot analysis of extracts of various cell lines using SCD Polyclonal Antibody at dilution of 1:1000.

Western Blotting

Image 3. Western blot analysis of extracts from normal (control) and SCD knockout (KO) HeLa cells using SCD Polyclonal Antibody at dilution of 1:1000.