

Datasheet for ABIN7259152

**anti-SLIT1 antibody**[Go to Product page](#)**1** Image

## Overview

Quantity:	200 µL
Target:	SLIT1
Reactivity:	Human
Host:	Rabbit
Clonality:	Polyclonal
Application:	Western Blotting (WB)

## Product Details

Immunogen:	Recombinant fusion protein of human SLIT1 (NP_003052.2).
Isotype:	IgG
Characteristics:	Polyclonal Antibody
Purification:	Affinity purification

## Target Details

Target:	SLIT1
Alternative Name:	SLIT1 ( <a href="#">SLIT1 Products</a> )
Background:	SLIT1 (Slit Guidance Ligand 1) is a Protein Coding gene. Diseases associated with SLIT1 include Hepatic Adenomas, Familial and Diaphragm Disease. Among its related pathways are Development Slit-Robo signaling and Guidance Cues and Growth Cone Motility. Gene Ontology (GO) annotations related to this gene include calcium ion binding and Roundabout binding. An important paralog of this gene is SLIT2.

### Target Details

Molecular Weight:	Observed_MW: 168 kDa
	Calculated_MW: 90 kDa/167 kDa
Gene ID:	6585
UniProt:	<a href="#">O75093</a>
Pathways:	<a href="#">Regulation of Cell Size</a>

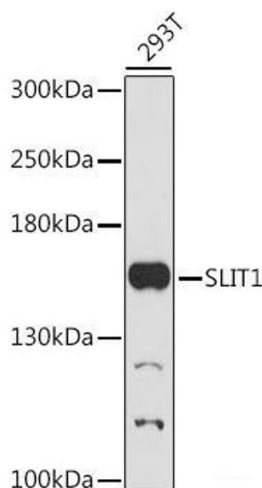
### Application Details

Application Notes:	WB 1:500-1:2000
Restrictions:	For Research Use only

### Handling

Format:	Liquid
Concentration:	1 mg/mL
Buffer:	PBS with 0.02 % sodium azide, 50 % glycerol, pH 7.3
Preservative:	Sodium azide
Precaution of Use:	This product contains Sodium azide: a POISONOUS AND HAZARDOUS SUBSTANCE which should be handled by trained staff only.
Storage:	-20 °C
Storage Comment:	Store at -20°C. Avoid freeze / thaw cycles.

### Images



#### Western Blotting

**Image 1.** Western blot analysis of extracts of 293T cells using SLIT1 Polyclonal Antibody at dilution of 1:1000.