

Datasheet for ABIN7259156

anti-Spt6 antibody**1** Image[Go to Product page](#)

Overview

Quantity:	200 µL
Target:	Spt6 (SUPT6H)
Reactivity:	Human, Mouse, Rat
Host:	Rabbit
Clonality:	Polyclonal
Conjugate:	This Spt6 antibody is un-conjugated
Application:	Immunofluorescence (IF)

Product Details

Immunogen:	Recombinant fusion protein of human SUPT6H (NP_003161.2).
Isotype:	IgG
Characteristics:	Polyclonal Antibody
Purification:	Affinity purification

Target Details

Target:	Spt6 (SUPT6H)
Alternative Name:	SUPT6H (SUPT6H Products)
Background:	SUPT6H (SPT6 Homolog, Histone Chaperone And Transcription Elongation Factor) is a Protein Coding gene. Diseases associated with SUPT6H include Immunodeficiency With Hyper-Igm, Type 2 and Granulomatous Disease, Chronic, Autosomal Recessive, Cytochrome B-Positive, Type I. Among its related pathways are Chromatin Regulation / Acetylation and Gene

Target Details

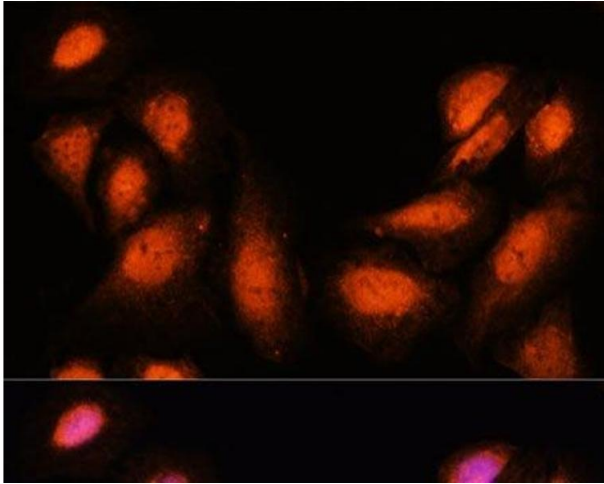
	Expression. Gene Ontology (GO) annotations related to this gene include nucleic acid binding and DNA-binding transcription factor activity.
Gene ID:	6830
UniProt:	Q7KZ85
Pathways:	Regulation of Leukocyte Mediated Immunity , Regulation of Muscle Cell Differentiation , Production of Molecular Mediator of Immune Response

Application Details

Application Notes:	IF 1:50-1:200
Restrictions:	For Research Use only

Handling

Format:	Liquid
Concentration:	1 mg/mL
Buffer:	PBS with 0.02 % sodium azide, 50 % glycerol, pH 7.3
Preservative:	Sodium azide
Precaution of Use:	This product contains Sodium azide: a POISONOUS AND HAZARDOUS SUBSTANCE which should be handled by trained staff only.
Storage:	-20 °C
Storage Comment:	Store at -20°C. Avoid freeze / thaw cycles.



Immunofluorescence

Image 1. Immunofluorescence analysis of U-2 OS cells using SUPT6H Polyclonal Antibody at dilution of 1:100. Blue: DAPI for nuclear staining.