

Datasheet for ABIN7259182

anti-PARP2 antibody**1** Image[Go to Product page](#)

Overview

Quantity:	200 µL
Target:	PARP2
Reactivity:	Mouse, Rat
Host:	Rabbit
Clonality:	Polyclonal
Conjugate:	This PARP2 antibody is un-conjugated
Application:	Western Blotting (WB)

Product Details

Immunogen:	A synthetic peptide of human PARP2 (NP_001036083.1).
Isotype:	IgG
Characteristics:	Polyclonal Antibody
Purification:	Affinity purification

Target Details

Target:	PARP2
Alternative Name:	PARP2 (PARP2 Products)
Background:	This gene encodes poly(ADP-ribosyl)transferase-like 2 protein, which contains a catalytic domain and is capable of catalyzing a poly(ADP-ribosyl)ation reaction. This protein has a catalytic domain which is homologous to that of poly (ADP-ribosyl) transferase, but lacks an N-terminal DNA binding domain which activates the C-terminal catalytic domain of poly (ADP-

Target Details

ribosyl) transferase. The basic residues within the N-terminal region of this protein may bear potential DNA-binding properties, and may be involved in the nuclear and/or nucleolar targeting of the protein. Two alternatively spliced transcript variants encoding distinct isoforms have been found.

Molecular Weight: Observed_MW: Refer to figures
Calculated_MW: 64 kDa/66 kDa

Gene ID: 10038

UniProt: [Q9UGN5](#)

Pathways: [DNA Damage Repair](#)

Application Details

Application Notes: WB 1:500-1:2000

Restrictions: For Research Use only

Handling

Format: Liquid

Concentration: 1 mg/mL

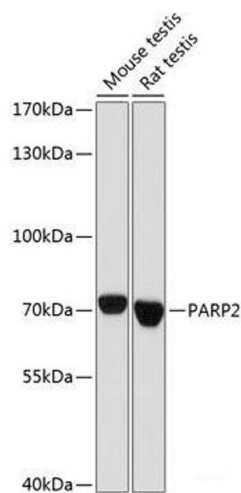
Buffer: PBS with 0.02 % sodium azide, 50 % glycerol, pH 7.3

Preservative: Sodium azide

Precaution of Use: This product contains Sodium azide: a POISONOUS AND HAZARDOUS SUBSTANCE which should be handled by trained staff only.

Storage: -20 °C

Storage Comment: Store at -20°C. Avoid freeze / thaw cycles.



Western Blotting

Image 1. Western blot analysis of extracts of various cell lines using PARP2 Polyclonal Antibody at dilution of 1:1000.