



Datasheet for ABIN7259204 anti-COMMD5 antibody



[Go to Product page](#)

1 Image

Overview

Quantity:	200 µL
Target:	COMMD5
Reactivity:	Human, Mouse, Rat
Host:	Rabbit
Clonality:	Polyclonal
Conjugate:	This COMMD5 antibody is un-conjugated
Application:	Immunofluorescence (IF)

Product Details

Immunogen:	Recombinant fusion protein of human COMMD5 (NP_054785.2).
Isotype:	IgG
Characteristics:	Polyclonal Antibody
Purification:	Affinity purification

Target Details

Target:	COMMD5
Alternative Name:	COMMD5 (COMMD5 Products)
Background:	May modulate activity of cullin-RING E3 ubiquitin ligase (CRL) complexes. Negatively regulates cell proliferation. Negatively regulates cell cycle G2/M phase transition probably by transactivating p21/CDKN1A through the p53/TP53-independent signaling pathway. Involved in kidney proximal tubule morphogenesis. Down-regulates activation of NF-kappa-B.

Target Details

Gene ID: 28991

UniProt: [Q9GZQ3](#)

Application Details

Application Notes: IF 1:50-1:200

Restrictions: For Research Use only

Handling

Format: Liquid

Concentration: 1 mg/mL

Buffer: PBS with 0.02 % sodium azide, 50 % glycerol, pH 7.3

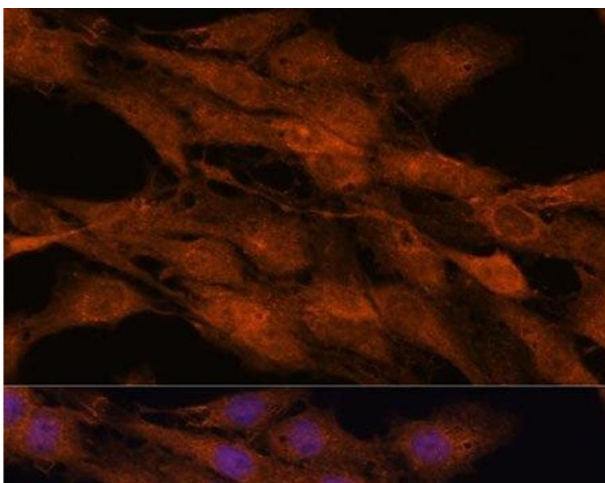
Preservative: Sodium azide

Precaution of Use: This product contains Sodium azide: a POISONOUS AND HAZARDOUS SUBSTANCE which should be handled by trained staff only.

Storage: -20 °C

Storage Comment: Store at -20°C. Avoid freeze / thaw cycles.

Images



Immunofluorescence

Image 1. Immunofluorescence analysis of C6 cells using COMMD5 Polyclonal Antibody at dilution of 1:100. Blue: DAPI for nuclear staining.