

## Datasheet for ABIN7259220

**anti-CRTAC1 antibody**[Go to Product page](#)

## 1 Image

## Overview

Quantity:	200 µL
Target:	CRTAC1
Reactivity:	Mouse
Host:	Rabbit
Clonality:	Polyclonal
Conjugate:	This CRTAC1 antibody is un-conjugated
Application:	Western Blotting (WB)

## Product Details

Immunogen:	Recombinant fusion protein of human CRTAC1 (NP_060528.3).
Isotype:	IgG
Characteristics:	Polyclonal Antibody
Purification:	Affinity purification

## Target Details

Target:	CRTAC1
Alternative Name:	CRTAC1 ( <a href="#">CRTAC1 Products</a> )
Background:	This gene encodes a glycosylated extracellular matrix protein that is found in the interterritorial matrix of articular deep zone cartilage. This protein is used as a marker to distinguish chondrocytes from osteoblasts and mesenchymal stem cells in culture. The presence of FG-GAP motifs and an RGD integrin-binding motif suggests that this protein may be involved in

## Target Details

cell-cell or cell-matrix interactions. Copy number alterations in this gene have been observed in neurofibromatosis type 1-associated glomus tumors. Alternative splicing results in multiple transcript variants.

Molecular Weight: Observed\_MW: 71 kDa  
Calculated\_MW: 68 kDa/70 kDa/71 kDa

Gene ID: 55118

UniProt: [Q9NQ79](#)

## Application Details

Application Notes: WB 1:500-1:2000

Restrictions: For Research Use only

## Handling

Format: Liquid

Concentration: 1 mg/mL

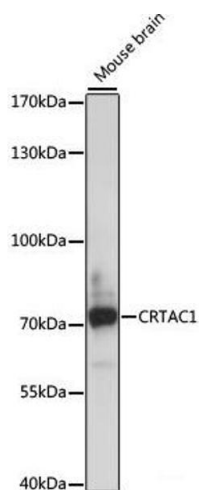
Buffer: PBS with 0.02 % sodium azide, 50 % glycerol, pH 7.3

Preservative: Sodium azide

Precaution of Use: This product contains Sodium azide: a POISONOUS AND HAZARDOUS SUBSTANCE which should be handled by trained staff only.

Storage: -20 °C

Storage Comment: Store at -20°C. Avoid freeze / thaw cycles.



#### Western Blotting

**Image 1.** Western blot analysis of extracts of Mouse brain using CRTAC1 Polyclonal Antibody at dilution of 1:1000.