



[Go to Product page](#)

Datasheet for ABIN7259244

## anti-ACBD3 antibody

### 2 Images

#### Overview

Quantity:	200 µL
Target:	ACBD3 (Acbd3)
Reactivity:	Human, Rat, Mouse
Host:	Rabbit
Clonality:	Polyclonal
Conjugate:	This ACBD3 antibody is un-conjugated
Application:	Immunofluorescence (IF)

#### Product Details

Immunogen:	Recombinant fusion protein of human ACBD3 (NP_073572.2).
Isotype:	IgG
Characteristics:	Polyclonal Antibody
Purification:	Affinity purification

#### Target Details

Target:	ACBD3 (Acbd3)
Alternative Name:	ACBD3 ( <a href="#">Acbd3 Products</a> )
Background:	The Golgi complex plays a key role in the sorting and modification of proteins exported from the endoplasmic reticulum. The protein encoded by this gene is involved in the maintenance of Golgi structure and function through its interaction with the integral membrane protein giantin. It may also be involved in the hormonal regulation of steroid formation.

## Target Details

Gene ID: 64746

UniProt: [Q9H3P7](#)

## Application Details

Application Notes: IF 1:50-1:200

Restrictions: For Research Use only

## Handling

Format: Liquid

Concentration: 1 mg/mL

Buffer: PBS with 0.02 % sodium azide, 50 % glycerol, pH 7.3

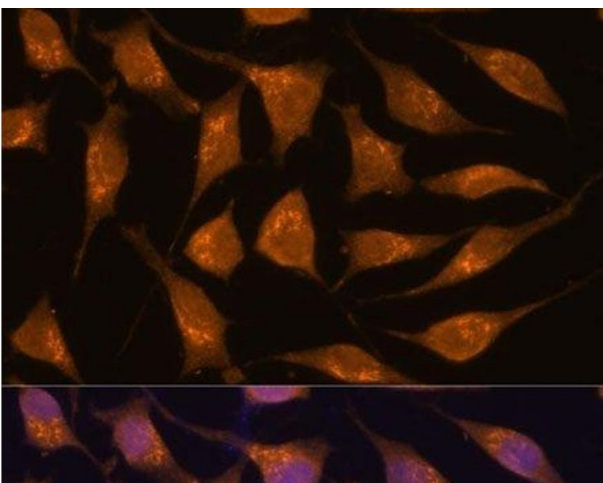
Preservative: Sodium azide

Precaution of Use: This product contains Sodium azide: a POISONOUS AND HAZARDOUS SUBSTANCE which should be handled by trained staff only.

Storage: -20 °C

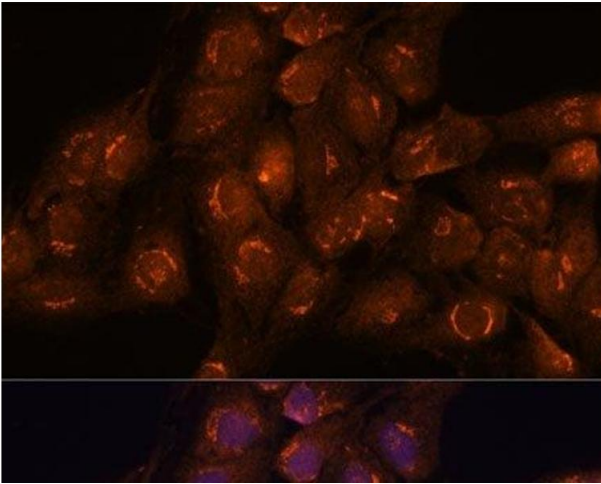
Storage Comment: Store at -20°C. Avoid freeze / thaw cycles.

## Images



### Immunofluorescence

**Image 1.** Immunofluorescence analysis of L929 cells using ACBD3 Polyclonal Antibody at dilution of 1:100. Blue: DAPI for nuclear staining.



### Immunofluorescence

**Image 2.** Immunofluorescence analysis of C6 cells using ACBD3 Polyclonal Antibody at dilution of 1:100. Blue: DAPI for nuclear staining.