

Datasheet for ABIN7259268

anti-LRRC50 antibody[Go to Product page](#)**1** Image

Overview

Quantity:	200 µL
Target:	LRRC50
Reactivity:	Rat
Host:	Rabbit
Clonality:	Polyclonal
Conjugate:	This LRRC50 antibody is un-conjugated
Application:	Western Blotting (WB)

Product Details

Immunogen:	Recombinant fusion protein of human DNAAF1 (NP_848547.4).
Isotype:	IgG
Characteristics:	Polyclonal Antibody
Purification:	Affinity purification

Target Details

Target:	LRRC50
Alternative Name:	DNAAF1 (LRRC50 Products)
Background:	<p>The protein encoded by this gene is cilium-specific and is required for the stability of the ciliary architecture. It is involved in the regulation of microtubule-based cilia and actin-based brush border microvilli. Mutations in this gene are associated with primary ciliary dyskinesia-13.</p> <p>Alternative splicing results in multiple transcript variants.</p>

Target Details

Molecular Weight:	Observed_MW: 80 kDa
	Calculated_MW: 47 kDa/53 kDa/80 kDa
Gene ID:	123872
UniProt:	Q8NEP3

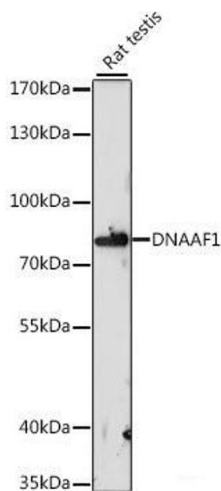
Application Details

Application Notes:	WB 1:500-1:2000
Restrictions:	For Research Use only

Handling

Format:	Liquid
Concentration:	1 mg/mL
Buffer:	PBS with 0.02 % sodium azide, 50 % glycerol, pH 7.3
Preservative:	Sodium azide
Precaution of Use:	This product contains Sodium azide: a POISONOUS AND HAZARDOUS SUBSTANCE which should be handled by trained staff only.
Storage:	-20 °C
Storage Comment:	Store at -20°C. Avoid freeze / thaw cycles.

Images



Western Blotting

Image 1. Western blot analysis of extracts of Rat testis using DNAAF1 Polyclonal Antibody at dilution of 1:1000.