

Datasheet for ABIN7259276

anti-FREM1 antibody[Go to Product page](#)**1** Image

Overview

Quantity:	200 µL
Target:	FREM1
Reactivity:	Human, Rat, Mouse
Host:	Rabbit
Clonality:	Polyclonal
Conjugate:	This FREM1 antibody is un-conjugated
Application:	Western Blotting (WB)

Product Details

Immunogen:	Recombinant fusion protein of human FREM1 (NP_659403.4).
Isotype:	IgG
Characteristics:	Polyclonal Antibody
Purification:	Affinity purification

Target Details

Target:	FREM1
Alternative Name:	FREM1 (FREM1 Products)
Background:	This gene encodes a basement membrane protein that may play a role in craniofacial and renal development. Mutations in this gene have been associated with bifid nose with or without anorectal and renal anomalies. Alternatively spliced transcript variants encoding different isoforms have been described. PubMed ID 19940113 describes one such variant that initiates

Target Details

transcription within a distinct, internal exon, the resulting shorter isoform (named Toll-like/interleukin-1 receptor regulator, TILRR) is suggested to be a co-receptor of the interleukin 1 receptor family and may regulate receptor function and Toll-like receptor/interleukin 1 receptor signal transduction, contributing to the control of inflammatory response activation.

Molecular Weight: Observed_MW: 72 kDa
Calculated_MW: 25 kDa/42 kDa/80 kDa/244 kDa

Gene ID: 158326

UniProt: [Q5H8C1](#)

Application Details

Application Notes: WB 1:500-1:2000

Restrictions: For Research Use only

Handling

Format: Liquid

Concentration: 1 mg/mL

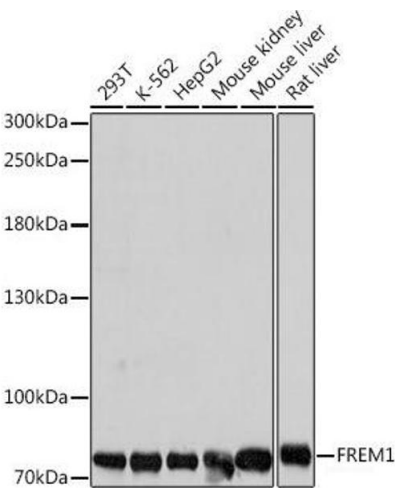
Buffer: PBS with 0.02 % sodium azide, 50 % glycerol, pH 7.3

Preservative: Sodium azide

Precaution of Use: This product contains Sodium azide: a POISONOUS AND HAZARDOUS SUBSTANCE which should be handled by trained staff only.

Storage: -20 °C

Storage Comment: Store at -20°C. Avoid freeze / thaw cycles.



Western Blotting

Image 1. Western blot analysis of extracts of various cell lines using FREM1 Polyclonal Antibody at dilution of 1:1000.