



[Go to Product page](#)

Datasheet for ABIN7259278
anti-RBM46 antibody

1 Image

Overview

Quantity:	200 µL
Target:	RBM46
Reactivity:	Human, Mouse
Host:	Rabbit
Clonality:	Polyclonal
Conjugate:	This RBM46 antibody is un-conjugated
Application:	Western Blotting (WB)

Product Details

Immunogen:	Recombinant fusion protein of human RBM46 (NP_659416.1).
Isotype:	IgG
Characteristics:	Polyclonal Antibody
Purification:	Affinity purification

Target Details

Target:	RBM46
Alternative Name:	RBM46 (RBM46 Products)
Background:	RBM46 (RNA Binding Motif Protein 46) is a Protein Coding gene. Gene Ontology (GO) annotations related to this gene include nucleic acid binding and nucleotide binding. An important paralog of this gene is A1CF.

Target Details

Molecular Weight:	Observed_MW: 56 kDa Calculated_MW: 53 kDa/55 kDa/60 kDa
Gene ID:	166863
UniProt:	Q8TBY0

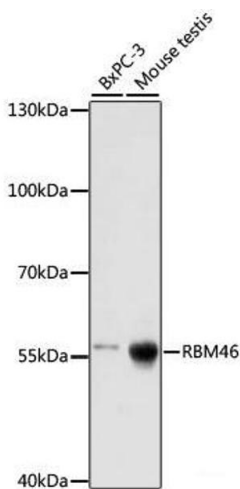
Application Details

Application Notes:	WB 1:500-1:2000
Restrictions:	For Research Use only

Handling

Format:	Liquid
Concentration:	1 mg/mL
Buffer:	PBS with 0.02 % sodium azide, 50 % glycerol, pH 7.3
Preservative:	Sodium azide
Precaution of Use:	This product contains Sodium azide: a POISONOUS AND HAZARDOUS SUBSTANCE which should be handled by trained staff only.
Storage:	-20 °C
Storage Comment:	Store at -20°C. Avoid freeze / thaw cycles.

Images



Western Blotting

Image 1. Western blot analysis of extracts of various cell lines using RBM46 Polyclonal Antibody at dilution of 1:1000.