



[Go to Product page](#)

## Datasheet for ABIN7259286 anti-NOMO2 antibody

### 1 Image

#### Overview

Quantity:	200 µL
Target:	NOMO2
Reactivity:	Human
Host:	Rabbit
Clonality:	Polyclonal
Conjugate:	This NOMO2 antibody is un-conjugated
Application:	Western Blotting (WB)

#### Product Details

Immunogen:	Recombinant fusion protein of human NOMO2 (NP_001004060.1).
Isotype:	IgG
Characteristics:	Polyclonal Antibody
Purification:	Affinity purification

#### Target Details

Target:	NOMO2
Alternative Name:	NOMO2 ( <a href="#">NOMO2 Products</a> )
Background:	<p>This gene encodes a protein originally thought to be related to the collagenase gene family. This gene is one of three highly similar genes in a region of duplication located on the p arm of chromosome 16. These three genes encode closely related proteins that may have the same function. The protein encoded by one of these genes has been identified as part of a protein</p>

## Target Details

---

complex that participates in the Nodal signaling pathway during vertebrate development. Mutations in ABCC6, which is located nearby, rather than mutations in this gene are associated with pseudoxanthoma elasticum (PXE). Two transcripts encoding different isoforms have been described.

---

Molecular Weight: Observed\_MW: 139 kDa  
Calculated\_MW: 122 kDa/134 kDa/139 kDa

---

Gene ID: 283820

---

UniProt: [Q5JPE7](#)

## Application Details

---

---

Application Notes: WB 1:500-1:2000

---

Restrictions: For Research Use only

## Handling

---

---

Format: Liquid

---

Concentration: 1 mg/mL

---

Buffer: PBS with 0.02 % sodium azide, 50 % glycerol, pH 7.3

---

Preservative: Sodium azide

---

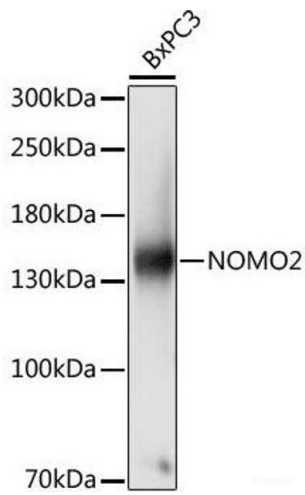
Precaution of Use: This product contains Sodium azide: a POISONOUS AND HAZARDOUS SUBSTANCE which should be handled by trained staff only.

---

Storage: -20 °C

---

Storage Comment: Store at -20°C. Avoid freeze / thaw cycles.



### Western Blotting

**Image 1.** Western blot analysis of extracts of BxPC3 cells using NOMO2 Polyclonal Antibody at dilution of 1:1000.