



Datasheet for ABIN7259292
anti-CPSF4L antibody



[Go to Product page](#)

1 Image

Overview

Quantity:	200 µL
Target:	CPSF4L
Reactivity:	Mouse
Host:	Rabbit
Clonality:	Polyclonal
Conjugate:	This CPSF4L antibody is un-conjugated
Application:	Western Blotting (WB)

Product Details

Immunogen:	Recombinant fusion protein of mouse Cpsf4l (NP_080958.2).
Isotype:	IgG
Characteristics:	Polyclonal Antibody
Purification:	Affinity purification

Target Details

Target:	CPSF4L
Alternative Name:	Cpsf4l (CPSF4L Products)
Background:	CPSF4L (Cleavage And Polyadenylation Specific Factor 4 Like) is a Protein Coding gene. Gene Ontology (GO) annotations related to this gene include RNA binding. An important paralog of this gene is CPSF4.

Target Details

Molecular Weight: Observed_MW: 22 kDa
Calculated_MW: 20 kDa

Gene ID: 52670

UniProt: [A6NMK7](#)

Application Details

Application Notes: WB 1:500-1:2000

Restrictions: For Research Use only

Handling

Format: Liquid

Concentration: 1 mg/mL

Buffer: PBS with 0.02 % sodium azide, 50 % glycerol, pH 7.3

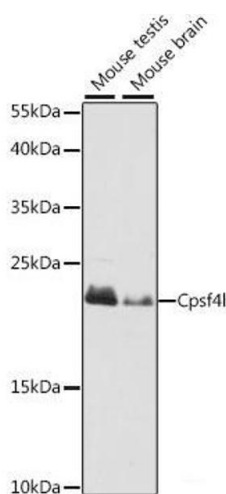
Preservative: Sodium azide

Precaution of Use: This product contains Sodium azide: a POISONOUS AND HAZARDOUS SUBSTANCE which should be handled by trained staff only.

Storage: -20 °C

Storage Comment: Store at -20°C. Avoid freeze / thaw cycles.

Images



Western Blotting

Image 1. Western blot analysis of extracts of various cell lines using Cpsf4l Polyclonal Antibody at dilution of 1:1000.