



[Go to Product page](#)

Datasheet for ABIN7259302

anti-c-FOS antibody

3 Images

Overview

Quantity:	200 µL
Target:	c-FOS (c-Fos)
Reactivity:	Human, Mouse, Rat
Host:	Rabbit
Clonality:	Polyclonal
Conjugate:	This c-FOS antibody is un-conjugated
Application:	Western Blotting (WB), Immunofluorescence (IF)

Product Details

Immunogen:	Recombinant protein of human c-Fos
Isotype:	IgG
Characteristics:	Polyclonal Antibody
Purification:	Affinity purification

Target Details

Target:	c-FOS (c-Fos)
Alternative Name:	c-Fos (c-Fos Products)
Background:	The Fos gene family consists of 4 members: FOS, FOSB, FOSL1, and FOSL2. These genes encode leucine zipper proteins that can dimerize with proteins of the JUN family, thereby forming the transcription factor complex AP-1. As such, the FOS proteins have been implicated as regulators of cell proliferation, differentiation, and transformation. In some cases, expression

Target Details

of the FOS gene has also been associated with apoptotic cell death.

Molecular Weight: Observed_MW: 60 kDa
Calculated_MW: 28 kDa/36 kDa/40 kDa

Gene ID: 2353

UniProt: [P01100](#)

Pathways: [S100 Proteins](#)

Application Details

Application Notes: WB 1:500-1:2000 IF 1:50-1:200

Restrictions: For Research Use only

Handling

Format: Liquid

Concentration: 1 mg/mL

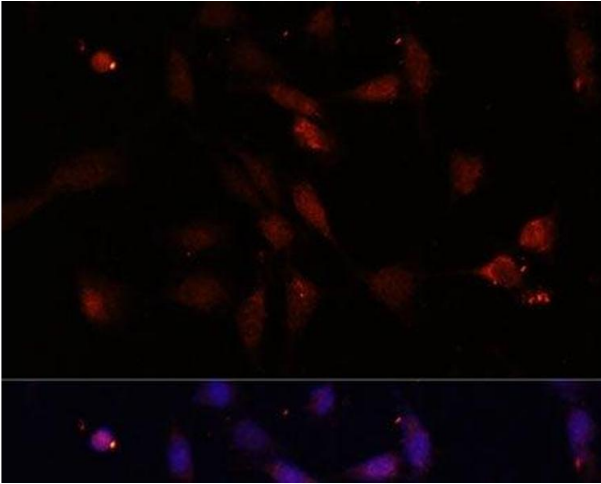
Buffer: PBS with 0.02 % sodium azide, 50 % glycerol, pH 7.3

Preservative: Sodium azide

Precaution of Use: This product contains Sodium azide: a POISONOUS AND HAZARDOUS SUBSTANCE which should be handled by trained staff only.

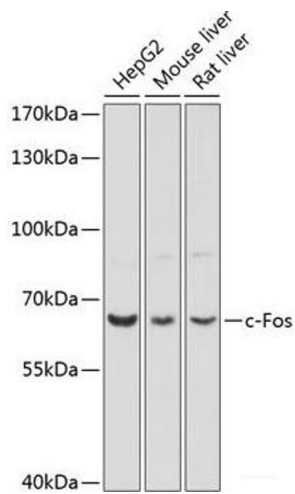
Storage: -20 °C

Storage Comment: Store at -20°C. Avoid freeze / thaw cycles.



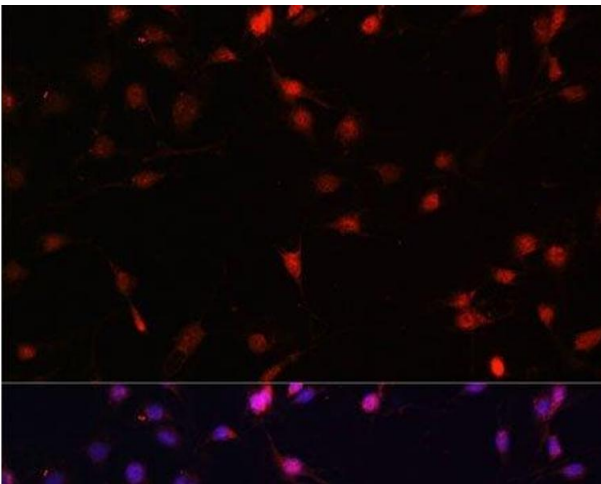
Immunofluorescence

Image 1. Immunofluorescence analysis of NIH/3T3 cells using c-Fos Polyclonal Antibody at dilution of 1:100. Blue: DAPI for nuclear staining.



Western Blotting

Image 2. Western blot analysis of extracts of various cell lines using c-Fos Polyclonal Antibody at dilution of 1:1000.



Immunofluorescence

Image 3. Immunofluorescence analysis of C6 cells using c-Fos Polyclonal Antibody at dilution of 1:100. Blue: DAPI for nuclear staining.