

Datasheet for ABIN7259312

anti-SCN5A antibody[Go to Product page](#)**1** Image

Overview

Quantity:	200 µL
Target:	SCN5A
Reactivity:	Mouse
Host:	Rabbit
Clonality:	Polyclonal
Conjugate:	This SCN5A antibody is un-conjugated
Application:	Western Blotting (WB)

Product Details

Immunogen:	A synthetic peptide of mouse SCN5A
Isotype:	IgG
Characteristics:	Polyclonal Antibody
Purification:	Affinity purification

Target Details

Target:	SCN5A
Alternative Name:	SCN5A (SCN5A Products)
Background:	The protein encoded by this gene is an integral membrane protein and tetrodotoxin-resistant voltage-gated sodium channel subunit. This protein is found primarily in cardiac muscle and is responsible for the initial upstroke of the action potential in an electrocardiogram. Defects in this gene are a cause of long QT syndrome type 3 (LQT3), an autosomal dominant cardiac

Target Details

disease. Alternative splicing results in several transcript variants encoding different isoforms.

Molecular Weight: Observed_MW: 226 kDa
Calculated_MW: 221 kDa/223 kDa/224 kDa/226 kDa

Gene ID: 6331

UniProt: [Q14524](#)

Application Details

Application Notes: WB 1:500-1:2000

Restrictions: For Research Use only

Handling

Format: Liquid

Concentration: 1 mg/mL

Buffer: PBS with 0.02 % sodium azide, 50 % glycerol, pH 7.3

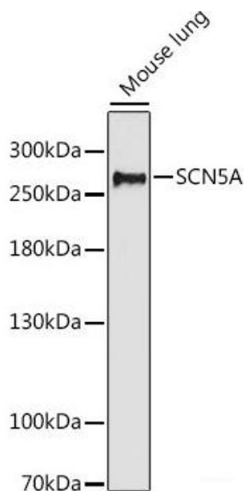
Preservative: Sodium azide

Precaution of Use: This product contains Sodium azide: a POISONOUS AND HAZARDOUS SUBSTANCE which should be handled by trained staff only.

Storage: -20 °C

Storage Comment: Store at -20°C. Avoid freeze / thaw cycles.

Images



Western Blotting

Image 1. Western blot analysis of extracts of Mouse lung using SCN5A Polyclonal Antibody at dilution of 1:1000.