

Datasheet for ABIN7259326

anti-Decorin antibody**3** Images[Go to Product page](#)

Overview

Quantity:	200 µL
Target:	Decorin (DCN)
Reactivity:	Human, Mouse, Rat
Host:	Rabbit
Clonality:	Polyclonal
Conjugate:	This Decorin antibody is un-conjugated
Application:	Immunohistochemistry (IHC), Immunofluorescence (IF)

Product Details

Immunogen:	Recombinant fusion protein of human Decorin (NP_598010.1).
Isotype:	IgG
Characteristics:	Polyclonal Antibody
Purification:	Affinity purification

Target Details

Target:	Decorin (DCN)
Alternative Name:	Decorin (DCN Products)
Background:	<p>This gene encodes a member of the small leucine-rich proteoglycan family of proteins. Alternative splicing results in multiple transcript variants, at least one of which encodes a preproprotein that is proteolytically processed to generate the mature protein. This protein plays a role in collagen fibril assembly. Binding of this protein to multiple cell surface receptors</p>

Target Details

mediates its role in tumor suppression, including a stimulatory effect on autophagy and inflammation and an inhibitory effect on angiogenesis and tumorigenesis. This gene and the related gene biglycan are thought to be the result of a gene duplication. Mutations in this gene are associated with congenital stromal corneal dystrophy in human patients.

Gene ID: 1634

UniProt: [P07585](#)

Pathways: [Glycosaminoglycan Metabolic Process](#)

Application Details

Application Notes: IHC 1:50-1:200 IF 1:50-1:200

Restrictions: For Research Use only

Handling

Format: Liquid

Concentration: 1 mg/mL

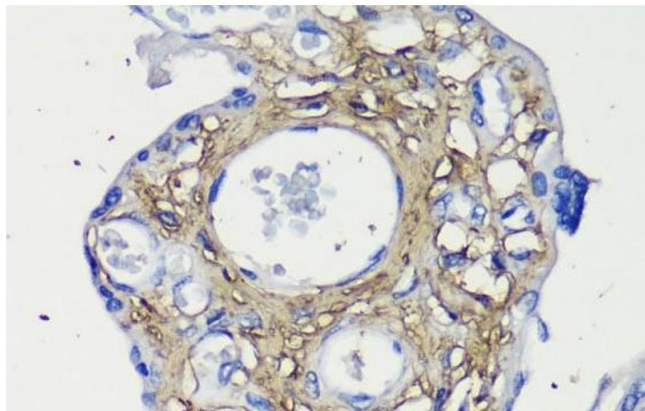
Buffer: PBS with 0.02 % sodium azide, 50 % glycerol, pH 7.3

Preservative: Sodium azide

Precaution of Use: This product contains Sodium azide: a POISONOUS AND HAZARDOUS SUBSTANCE which should be handled by trained staff only.

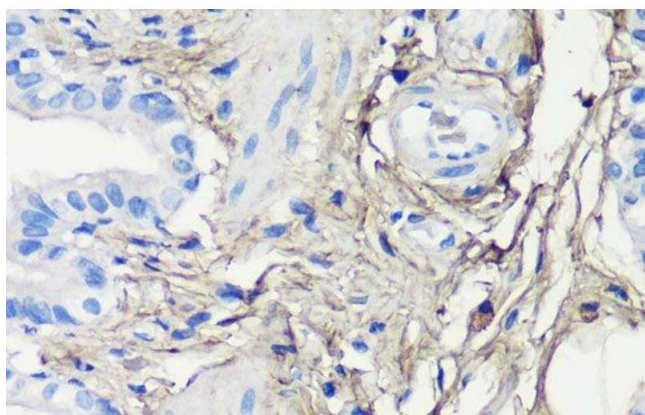
Storage: -20 °C

Storage Comment: Store at -20°C. Avoid freeze / thaw cycles.



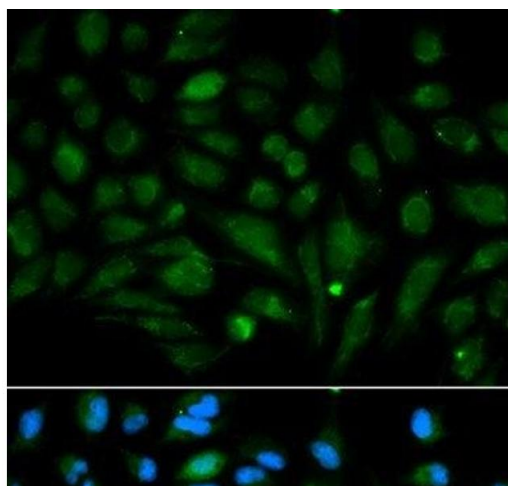
Immunohistochemistry (Paraffin-embedded Sections)

Image 1. Immunohistochemistry of paraffin-embedded Human placenta using Decorin Polyclonal Antibody at dilution of 1:200 (40x lens).



Immunohistochemistry (Paraffin-embedded Sections)

Image 2. Immunohistochemistry of paraffin-embedded Rat lung using Decorin Polyclonal Antibody at dilution of 1:200 (40x lens).



Immunofluorescence

Image 3. Immunofluorescence analysis of MCF-7 cells using Decorin Polyclonal Antibody