

Datasheet for ABIN7259338

**anti-PLA2G5 antibody**[Go to Product page](#)**1** Image

## Overview

Quantity:	200 µL
Target:	PLA2G5
Reactivity:	Mouse
Host:	Rabbit
Clonality:	Polyclonal
Conjugate:	This PLA2G5 antibody is un-conjugated
Application:	Immunofluorescence (IF)

## Product Details

Immunogen:	Recombinant fusion protein of human PLA2G5 (NP_000920.1).
Isotype:	IgG
Characteristics:	Polyclonal Antibody
Purification:	Affinity purification

## Target Details

Target:	PLA2G5
Alternative Name:	PLA2G5 ( <a href="#">PLA2G5 Products</a> )
Background:	This gene is a member of the secretory phospholipase A2 family. It is located in a tightly-linked cluster of secretory phospholipase A2 genes on chromosome 1. The encoded enzyme catalyzes the hydrolysis of membrane phospholipids to generate lysophospholipids and free fatty acids including arachidonic acid. It preferentially hydrolyzes linoleoyl-containing

## Target Details

phosphatidylcholine substrates. Secretion of this enzyme is thought to induce inflammatory responses in neighboring cells. Alternatively spliced transcript variants have been found, but their full-length nature has not been determined.

Gene ID: 5322

UniProt: [P39877](#)

Pathways: [Inositol Metabolic Process](#)

## Application Details

Application Notes: IF 1:50-1:200

Restrictions: For Research Use only

## Handling

Format: Liquid

Concentration: 1 mg/mL

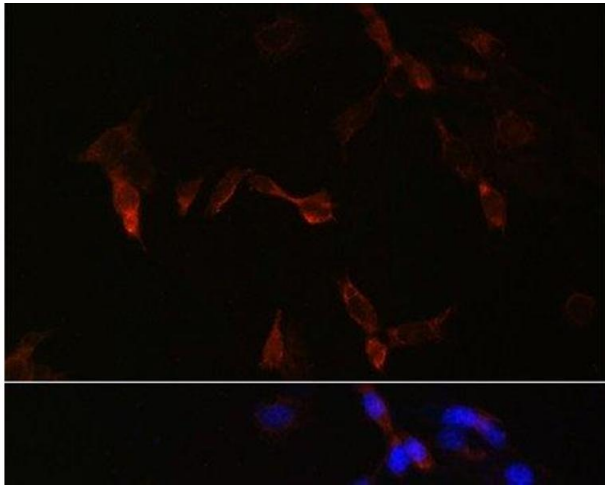
Buffer: PBS with 0.02 % sodium azide, 50 % glycerol, pH 7.3

Preservative: Sodium azide

Precaution of Use: This product contains Sodium azide: a POISONOUS AND HAZARDOUS SUBSTANCE which should be handled by trained staff only.

Storage: -20 °C

Storage Comment: Store at -20°C. Avoid freeze / thaw cycles.



#### Immunofluorescence

**Image 1.** Immunofluorescence analysis of NIH/3T3 cells using PLA2G5 Polyclonal Antibody at dilution of 1:100. Blue: DAPI for nuclear staining.