

Datasheet for ABIN7259356

## anti-IL-18 antibody

3 Images



[Go to Product page](#)

### Overview

Quantity:	200 µL
Target:	IL-18 (IL18)
Reactivity:	Human, Mouse, Rat
Host:	Rabbit
Clonality:	Polyclonal
Conjugate:	This IL-18 antibody is un-conjugated
Application:	Immunofluorescence (IF)

### Product Details

Immunogen:	Recombinant protein of human IL18.
Isotype:	IgG
Characteristics:	Polyclonal Antibody
Purification:	Affinity purification

### Target Details

Target:	IL-18 (IL18)
Alternative Name:	IL18 ( <a href="#">IL18 Products</a> )
Background:	<p>The protein encoded by this gene is a proinflammatory cytokine that augments natural killer cell activity in spleen cells, and stimulates interferon gamma production in T-helper type I cells.</p> <p>Alternatively spliced transcript variants encoding different isoforms have been found for this gene.</p>

## Target Details

Gene ID:	3606
UniProt:	<a href="#">Q14116</a>
Pathways:	<a href="#">Cellular Response to Molecule of Bacterial Origin</a> , <a href="#">Activated T Cell Proliferation</a> , <a href="#">Cancer Immune Checkpoints</a> , <a href="#">Inflammasome</a>

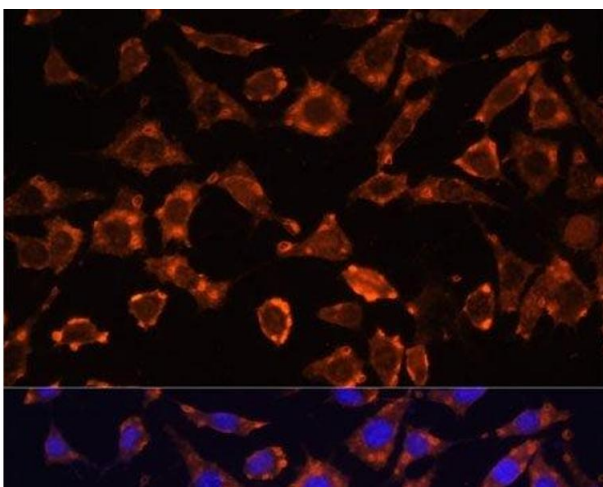
## Application Details

Application Notes:	IF 1:50-1:200
Restrictions:	For Research Use only

## Handling

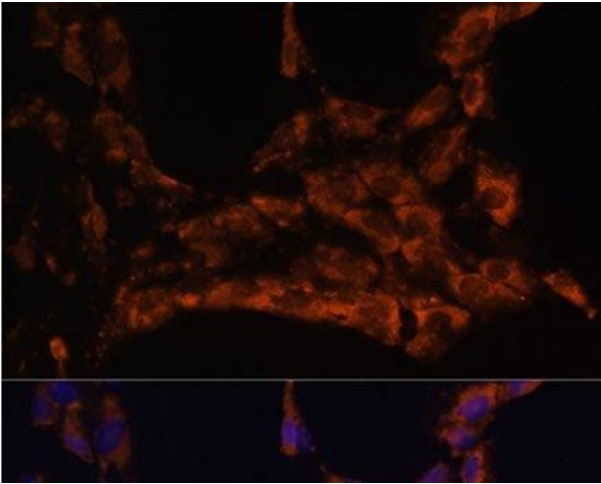
Format:	Liquid
Concentration:	1 mg/mL
Buffer:	PBS with 0.02 % sodium azide, 50 % glycerol, pH 7.3
Preservative:	Sodium azide
Precaution of Use:	This product contains Sodium azide: a POISONOUS AND HAZARDOUS SUBSTANCE which should be handled by trained staff only.
Storage:	-20 °C
Storage Comment:	Store at -20°C. Avoid freeze / thaw cycles.

## Images



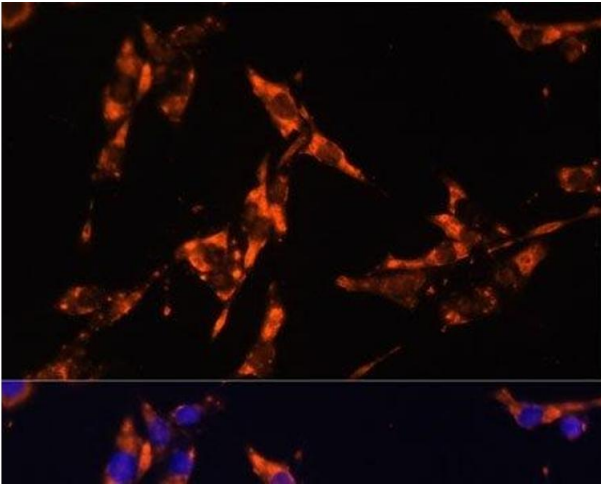
### Immunofluorescence

**Image 1.** Immunofluorescence analysis of L929 cells using IL18 Polyclonal Antibody at dilution of 1:100. Blue: DAPI for nuclear staining.



#### Immunofluorescence

**Image 2.** Immunofluorescence analysis of C6 cells using IL18 Polyclonal Antibody at dilution of 1:100. Blue: DAPI for nuclear staining.



#### Immunofluorescence

**Image 3.** Immunofluorescence analysis of HeLa cells using IL18 Polyclonal Antibody at dilution of 1:100. Blue: DAPI for nuclear staining.