

Datasheet for ABIN7259370

anti-RHOB antibody

1 Image

[Go to Product page](#)

Overview

Quantity:	200 µL
Target:	RHOB
Reactivity:	Mouse
Host:	Rabbit
Clonality:	Polyclonal
Conjugate:	This RHOB antibody is un-conjugated
Application:	Western Blotting (WB)

Product Details

Immunogen:	A synthetic peptide of human RHOB (NP_004031.1).
Isotype:	IgG
Characteristics:	Polyclonal Antibody
Purification:	Affinity purification

Target Details

Target:	RHOB
Alternative Name:	RHOB (RHOB Products)
Background:	Ras homolog gene family, member B, also known as RHOB, is a protein which in humans is encoded by the RHOB gene. RHOB is a member of the Rho GTP-binding protein family. Mediates apoptosis in neoplastically transformed cells after DNA damage. It is not necessary for development but affects cell adhesion and growth factor signaling in transformed cells. It plays

Target Details

a negative role in tumorigenesis as deletion causes tumor formation. It involved in intracellular protein trafficking of a number of proteins, and serves as a microtubule-dependent signal that is required for the myosin contractile ring formation during cell cycle cytokinesis. Required for genotoxic stress-induced cell death in breast cancer cells.

Molecular Weight: Observed_MW: 22 kDa
Calculated_MW: 22 kDa

Gene ID: 388

UniProt: [P62745](#)

Application Details

Application Notes: WB 1:500-1:2000

Restrictions: For Research Use only

Handling

Format: Liquid

Concentration: 1 mg/mL

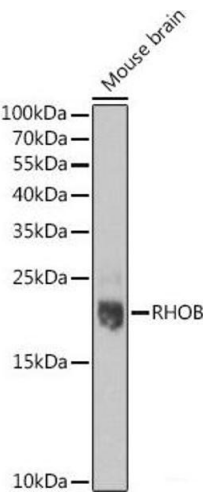
Buffer: PBS with 0.02 % sodium azide, 50 % glycerol, pH 7.3

Preservative: Sodium azide

Precaution of Use: This product contains Sodium azide: a POISONOUS AND HAZARDOUS SUBSTANCE which should be handled by trained staff only.

Storage: -20 °C

Storage Comment: Store at -20°C. Avoid freeze / thaw cycles.



Western Blotting

Image 1. Western blot analysis of extracts of Mouse brain using RHOB Polyclonal Antibody at dilution of 1:1000.