



## Datasheet for ABIN7259392 anti-CASQ2 antibody



[Go to Product page](#)

### 1 Image

#### Overview

Quantity:	200 µL
Target:	CASQ2
Reactivity:	Mouse, Rat
Host:	Rabbit
Clonality:	Polyclonal
Conjugate:	This CASQ2 antibody is un-conjugated
Application:	Immunohistochemistry (IHC)

#### Product Details

Immunogen:	Recombinant fusion protein of human CASQ2 (NP_001223.2).
Isotype:	IgG
Characteristics:	Polyclonal Antibody
Purification:	Affinity purification

#### Target Details

Target:	CASQ2
Alternative Name:	CASQ2 ( <a href="#">CASQ2 Products</a> )
Background:	The protein encoded by this gene specifies the cardiac muscle family member of the calsequestrin family. Calsequestrin is localized to the sarcoplasmic reticulum in cardiac and slow skeletal muscle cells. The protein is a calcium binding protein that stores calcium for muscle function. Mutations in this gene cause stress-induced polymorphic ventricular

## Target Details

---

tachycardia, also referred to as catecholaminergic polymorphic ventricular tachycardia 2 (CPVT2), a disease characterized by bidirectional ventricular tachycardia that may lead to cardiac arrest.

Gene ID: 845

UniProt: [O14958](#)

Pathways: [Negative Regulation of Transporter Activity](#)

## Application Details

---

Application Notes: IHC 1:50-1:100

Restrictions: For Research Use only

## Handling

---

Format: Liquid

Concentration: 1 mg/mL

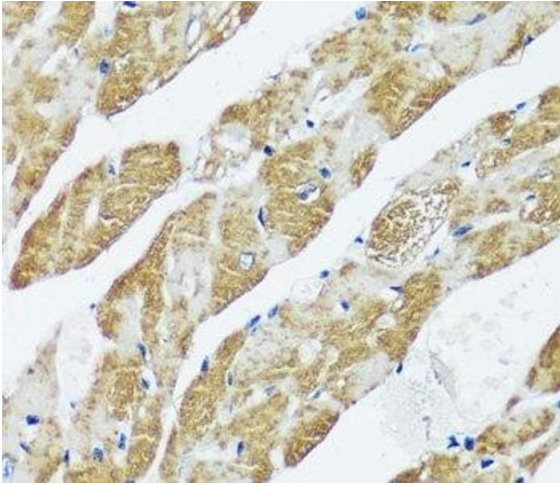
Buffer: PBS with 0.02 % sodium azide, 50 % glycerol, pH 7.3

Preservative: Sodium azide

Precaution of Use: This product contains Sodium azide: a POISONOUS AND HAZARDOUS SUBSTANCE which should be handled by trained staff only.

Storage: -20 °C

Storage Comment: Store at -20°C. Avoid freeze / thaw cycles.



#### Immunohistochemistry (Paraffin-embedded Sections)

**Image 1.** Immunohistochemistry of paraffin-embedded Mouse heart using CASQ2 Polyclonal Antibody at dilution of 1:100 (40x lens).