

Datasheet for ABIN7259412

**anti-ETS2 antibody**[Go to Product page](#)**1** Image

## Overview

Quantity:	200 µL
Target:	ETS2
Reactivity:	Mouse, Rat
Host:	Rabbit
Clonality:	Polyclonal
Conjugate:	This ETS2 antibody is un-conjugated
Application:	Western Blotting (WB)

## Product Details

Immunogen:	A synthetic peptide of human ETS2.
Isotype:	IgG
Characteristics:	Polyclonal Antibody
Purification:	Affinity purification

## Target Details

Target:	ETS2
Alternative Name:	ETS2 ( <a href="#">ETS2 Products</a> )
Background:	This gene encodes a transcription factor which regulates genes involved in development and apoptosis. The encoded protein is also a protooncogene and shown to be involved in regulation of telomerase. A pseudogene of this gene is located on the X chromosome. Alternative splicing results in multiple transcript variants.

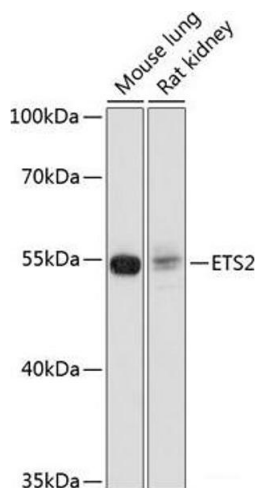
## Target Details

Molecular Weight:	Observed_MW: Refer to figures
	Calculated_MW: 53 kDa
Gene ID:	2114
UniProt:	<a href="#">P15036</a>
Pathways:	<a href="#">EGFR Signaling Pathway</a> , <a href="#">Myometrial Relaxation and Contraction</a>

## Application Details

Application Notes:	WB 1:500-1:2000
Restrictions:	For Research Use only
Handling	
Format:	Liquid
Concentration:	1 mg/mL
Buffer:	PBS with 0.02 % sodium azide, 50 % glycerol, pH 7.3
Preservative:	Sodium azide
Precaution of Use:	This product contains Sodium azide: a POISONOUS AND HAZARDOUS SUBSTANCE which should be handled by trained staff only.
Storage:	-20 °C
Storage Comment:	Store at -20°C. Avoid freeze / thaw cycles.

## Images



### Western Blotting

**Image 1.** Western blot analysis of extracts of various cell lines using ETS2 Polyclonal Antibody at dilution of 1:1000.