

Datasheet for ABIN7259428

**anti-HMGCR antibody****3** Images[Go to Product page](#)

## Overview

|              |   |
|--------------|---|
| Quantity:    | 200 µL  |
| Target:      | HMGCR   |
| Reactivity:  | Human, Rat, Mouse                                   |
| Host:        | Rabbit  |
| Clonality:   | Polyclonal  |
| Conjugate:   | This HMGCR antibody is un-conjugated                |
| Application: | Immunohistochemistry (IHC), Immunofluorescence (IF) |

## Product Details

|                  |                                     |
|------------------|-------------------------------------|
| Immunogen:       | Recombinant protein of human HMGCR. |
| Isotype:         | IgG                                 |
| Characteristics: | Polyclonal Antibody                 |
| Purification:    | Affinity purification               |

## Target Details

|                   |   |
|-------------------|---|
| Target:           | HMGCR   |
| Alternative Name: | HMGCR ( <a href="#">HMGCR Products</a> )  |
| Background:       | HMG-CoA reductase is the rate-limiting enzyme for cholesterol synthesis and is regulated via a negative feedback mechanism mediated by sterols and non-sterol metabolites derived from mevalonate, the product of the reaction catalyzed by reductase. Normally in mammalian cells this enzyme is suppressed by cholesterol derived from the internalization and degradation of |

## Target Details

low density lipoprotein (LDL) via the LDL receptor. Competitive inhibitors of the reductase induce the expression of LDL receptors in the liver, which in turn increases the catabolism of plasma LDL and lowers the plasma concentration of cholesterol, an important determinant of atherosclerosis. Alternatively spliced transcript variants encoding different isoforms have been found for this gene.

Gene ID: 3156

UniProt: [P04035](#)

Pathways: [AMPK Signaling](#), [Negative Regulation of Hormone Secretion](#), [Regulation of Lipid Metabolism by PPARalpha](#)

## Application Details

Application Notes: IHC 1:50-1:100 IF 1:50-1:100

Restrictions: For Research Use only

## Handling

Format: Liquid

Concentration: 1 mg/mL

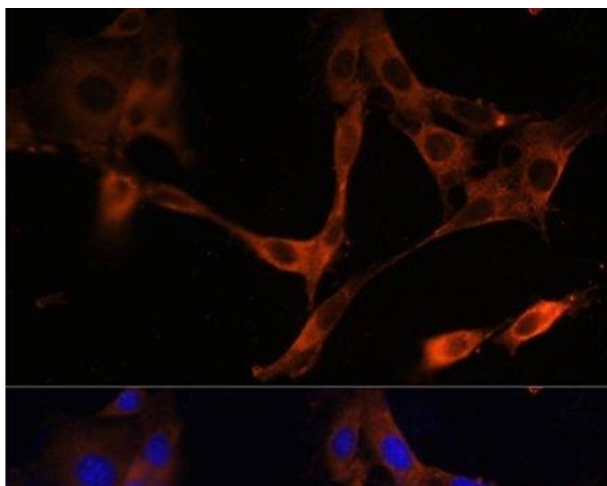
Buffer: PBS with 0.02 % sodium azide, 50 % glycerol, pH 7.3

Preservative: Sodium azide

Precaution of Use: This product contains Sodium azide: a POISONOUS AND HAZARDOUS SUBSTANCE which should be handled by trained staff only.

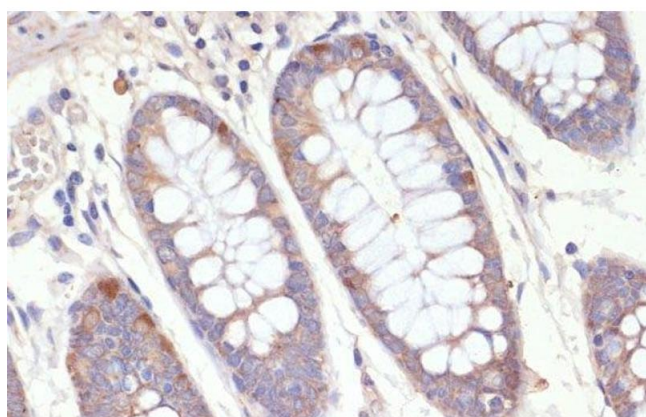
Storage: -20 °C

Storage Comment: Store at -20°C. Avoid freeze / thaw cycles.



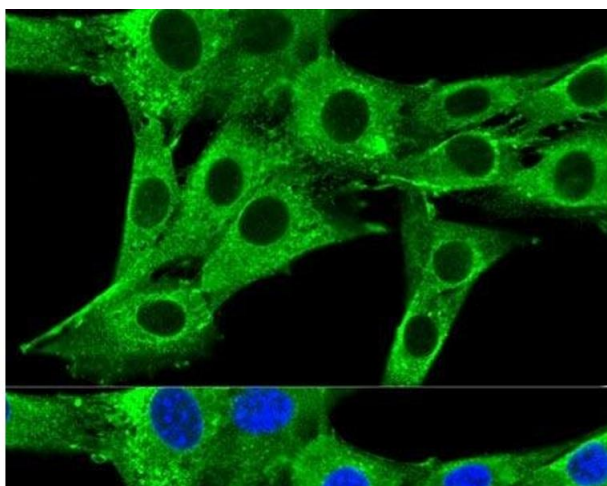
#### Immunofluorescence

**Image 1.** Immunofluorescence analysis of NIH/3T3 cells using HMGCR Polyclonal Antibody at dilution of 1:100. Blue: DAPI for nuclear staining.



#### Immunohistochemistry (Paraffin-embedded Sections)

**Image 2.** Immunohistochemistry of paraffin-embedded Human colon using HMGCR Polyclonal Antibody at dilution of 1:200 (40x lens).



#### Immunofluorescence

**Image 3.** Confocal immunofluorescence analysis of NIH-3T3 cells using HMGCR Polyclonal Antibody at dilution of 1:200. Blue: DAPI for nuclear staining.