

Datasheet for ABIN7259432

**anti-S100A8 antibody****3** Images[Go to Product page](#)

## Overview

Quantity:	200 µL
Target:	S100A8
Reactivity:	Human, Mouse, Rat
Host:	Rabbit
Clonality:	Polyclonal
Conjugate:	This S100A8 antibody is un-conjugated
Application:	Western Blotting (WB), Immunohistochemistry (IHC), Immunofluorescence (IF)

## Product Details

Immunogen:	Recombinant fusion protein of human S100A8 (NP_002955.2).
Isotype:	IgG
Characteristics:	Polyclonal Antibody
Purification:	Affinity purification

## Target Details

Target:	S100A8
Alternative Name:	S100A8 ( <a href="#">S100A8 Products</a> )
Background:	The protein encoded by this gene is a member of the S100 family of proteins containing 2 EF-hand calcium-binding motifs. S100 proteins are localized in the cytoplasm and/or nucleus of a wide range of cells, and involved in the regulation of a number of cellular processes such as cell cycle progression and differentiation. S100 genes include at least 13 members which are

## Target Details

located as a cluster on chromosome 1q21. This protein may function in the inhibition of casein kinase and as a cytokine. Altered expression of this protein is associated with the disease cystic fibrosis. Multiple transcript variants encoding different isoforms have been found for this gene.

Molecular Weight: Observed\_MW: 11 kDa  
Calculated\_MW: 10 kDa

Gene ID: 6279

UniProt: [P05109](#)

Pathways: [Transition Metal Ion Homeostasis](#), [Positive Regulation of Endopeptidase Activity](#), [S100 Proteins](#)

## Application Details

Application Notes: WB 1:500-1:2000 IHC 1:50-1:100 IF 1:50-1:100

Restrictions: For Research Use only

## Handling

Format: Liquid

Concentration: 1 mg/mL

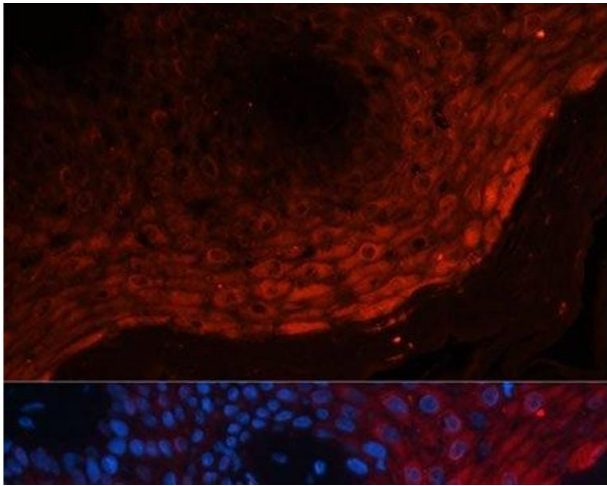
Buffer: PBS with 0.02 % sodium azide, 50 % glycerol, pH 7.3

Preservative: Sodium azide

Precaution of Use: This product contains Sodium azide: a POISONOUS AND HAZARDOUS SUBSTANCE which should be handled by trained staff only.

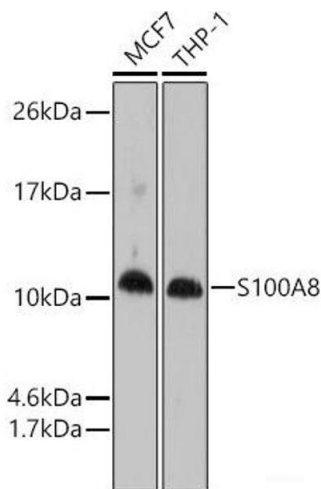
Storage: -20 °C

Storage Comment: Store at -20°C. Avoid freeze / thaw cycles.



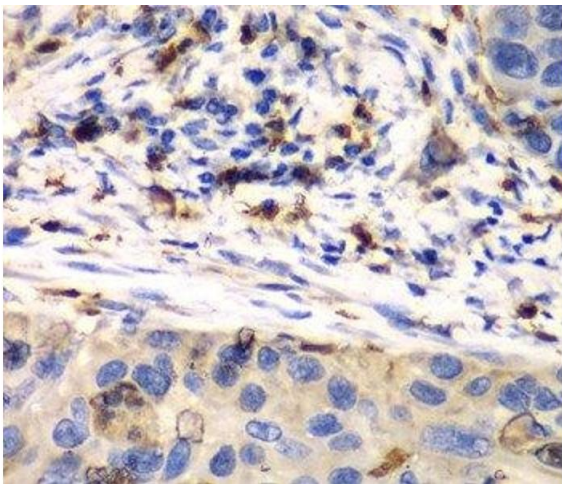
### Immunofluorescence

**Image 1.** Immunofluorescence analysis of Human skin cancer using S100A8 Polyclonal Antibody at dilution of 1:100 (40x lens). Blue: DAPI for nuclear staining.



### Western Blotting

**Image 2.** Western blot analysis of extracts of various cell lines using S100A8 Polyclonal Antibody at dilution of 1:1000.



### Immunohistochemistry (Paraffin-embedded Sections)

**Image 3.** Immunohistochemistry of paraffin-embedded Human esophageal cancer using S100A8 Polyclonal Antibody at dilution of 1:100 (40x lens).